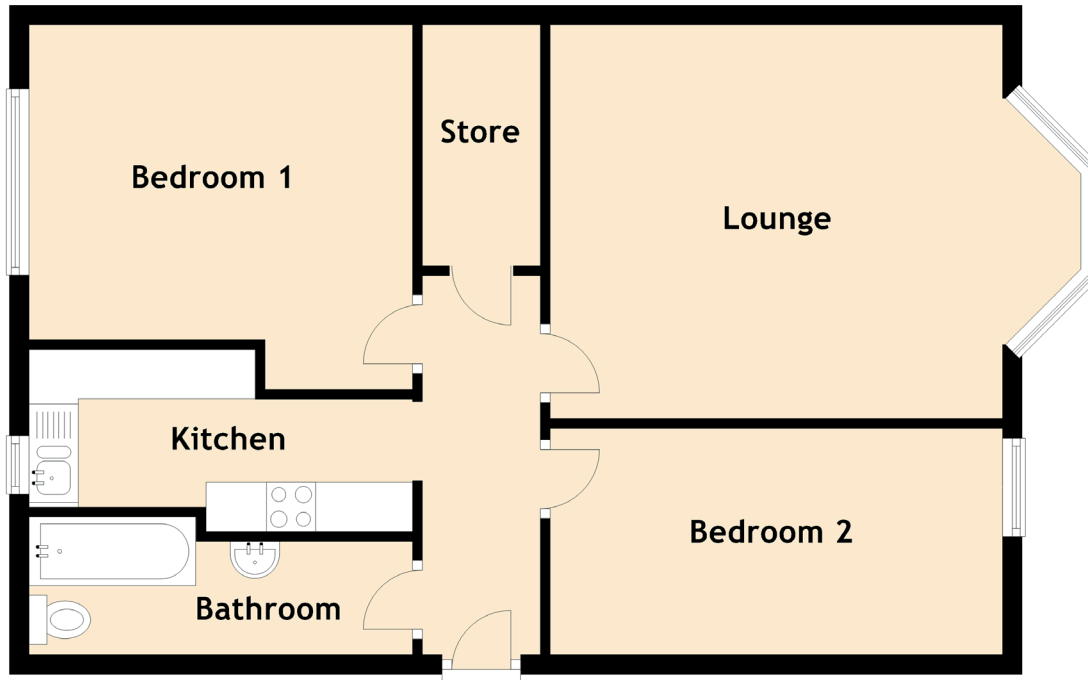


0/2, 13 Mavisbank Terrace

PAISLEY, PA1 1TL



Approximate Dimensions
(Taken from the widest point)

Lounge	4.60m (15'1") x 4.00m (13'1")
Kitchen	3.90m (12'10") x 1.85m (6'1")
Store	2.45m (8') x 1.20m (3'11")
Bedroom 1	3.90m (12'10") x 3.70m (12'2")
Bedroom 2	4.60m (15'1") x 2.30m (7'7")
Bathroom	3.90m (12'10") x 1.30m (4'3")