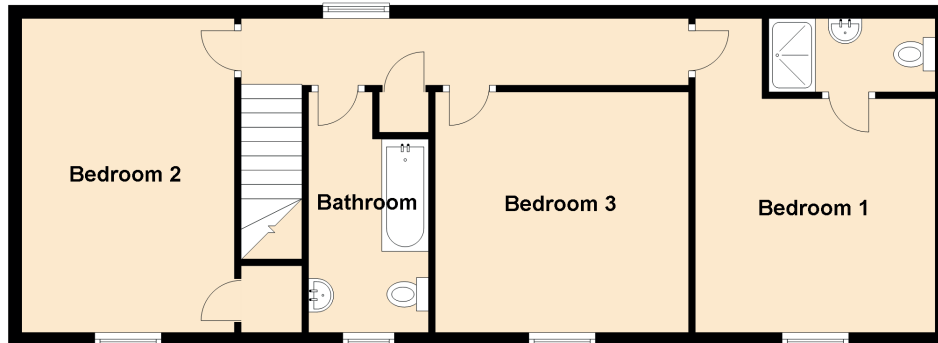
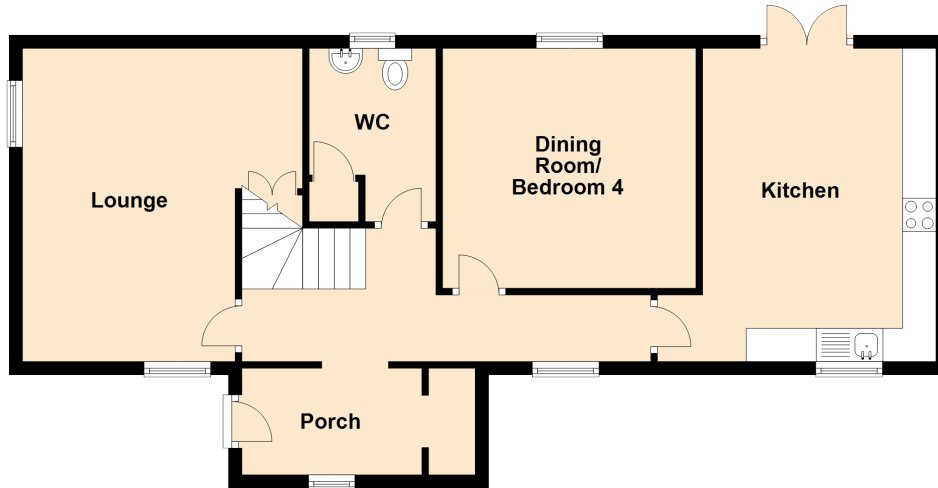


3 Woodside Road

LIFF, DUNDEE, ANGUS, DD2 5LU



Approximate Dimensions (Taken from the widest point)

Porch	2.70m (8'10") x 1.60m (5'3")
Lounge	4.70m (15'5") x 4.20m (13'9")
Kitchen	4.70m (15'5") x 3.50m (11'6")
Dining Room/Bedroom 4	3.80m (12'6") x 3.60m (11'10")
Bedroom 1	4.70m (15'5") x 3.60m (11'10")
Bedroom 2	4.80m (15'9") x 3.20m (10'6")
Bedroom 3	3.80m (12'6") x 3.60m (11'10")
Bathroom	3.60m (11'10") x 1.80m (5'11")
WC	2.60m (8'6") x 1.90m (6'3")