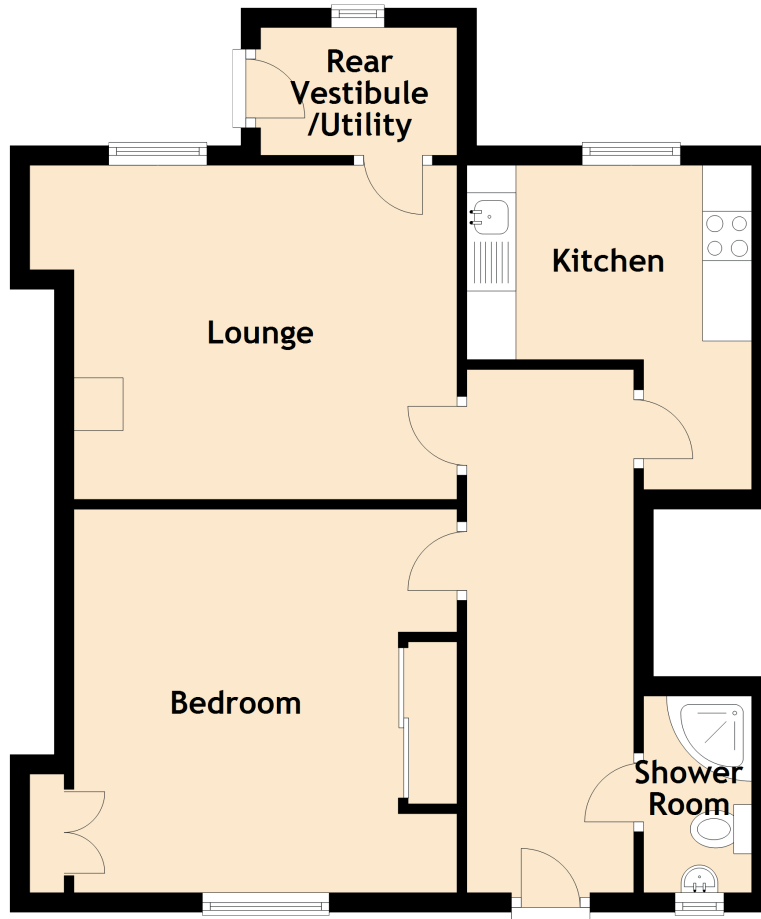


5 Argyle Terrace

INVERNESS, IV2 3HN



Approximate Dimensions (Taken from the widest point)

Lounge	3.90m (12'10") x 3.40m (11'2")
Rear Vestibule/Utility	2.00m (6'7") x 1.30m (4'3")
Kitchen	3.30m (10'10") x 2.50m (8'2")
Bedroom	3.90m (12'10") x 3.90m (12'10")
Shower Room	2.00m (6'7") x 1.10m (3'7")