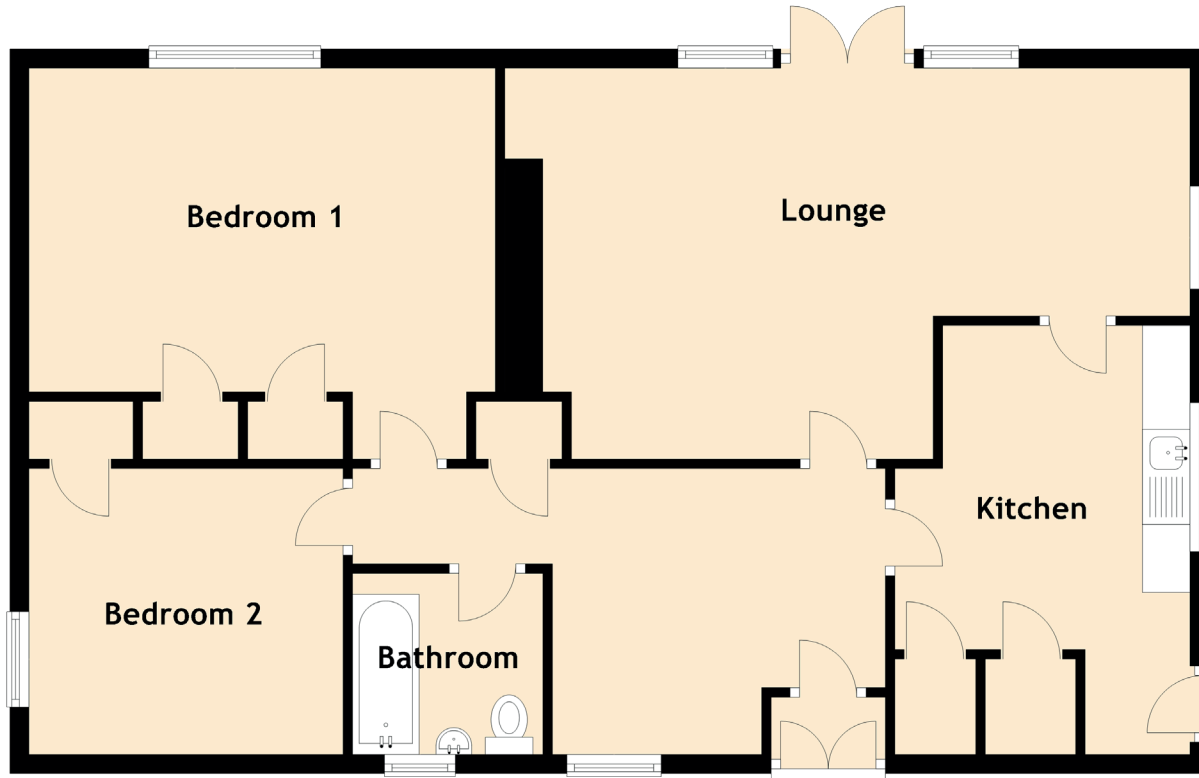


35 Forthill Road

BROUGHTY FERRY, DUNDEE, ANGUS, DD5 3DP



Approximate Dimensions
(Taken from the widest point)

Lounge	6.80m (22'4") x 4.10m (13'5")
Kitchen	4.50m (14'9") x 3.10m (10'2")
Bedroom 1	4.90m (16'1") x 3.40m (11'2")
Bedroom 2	3.30m (10'10") x 3.00m (9'10")
Bathroom	2.00m (6'7") x 1.90m (6'3")

Gross internal floor area (m²): 88m²

EPC Rating: F