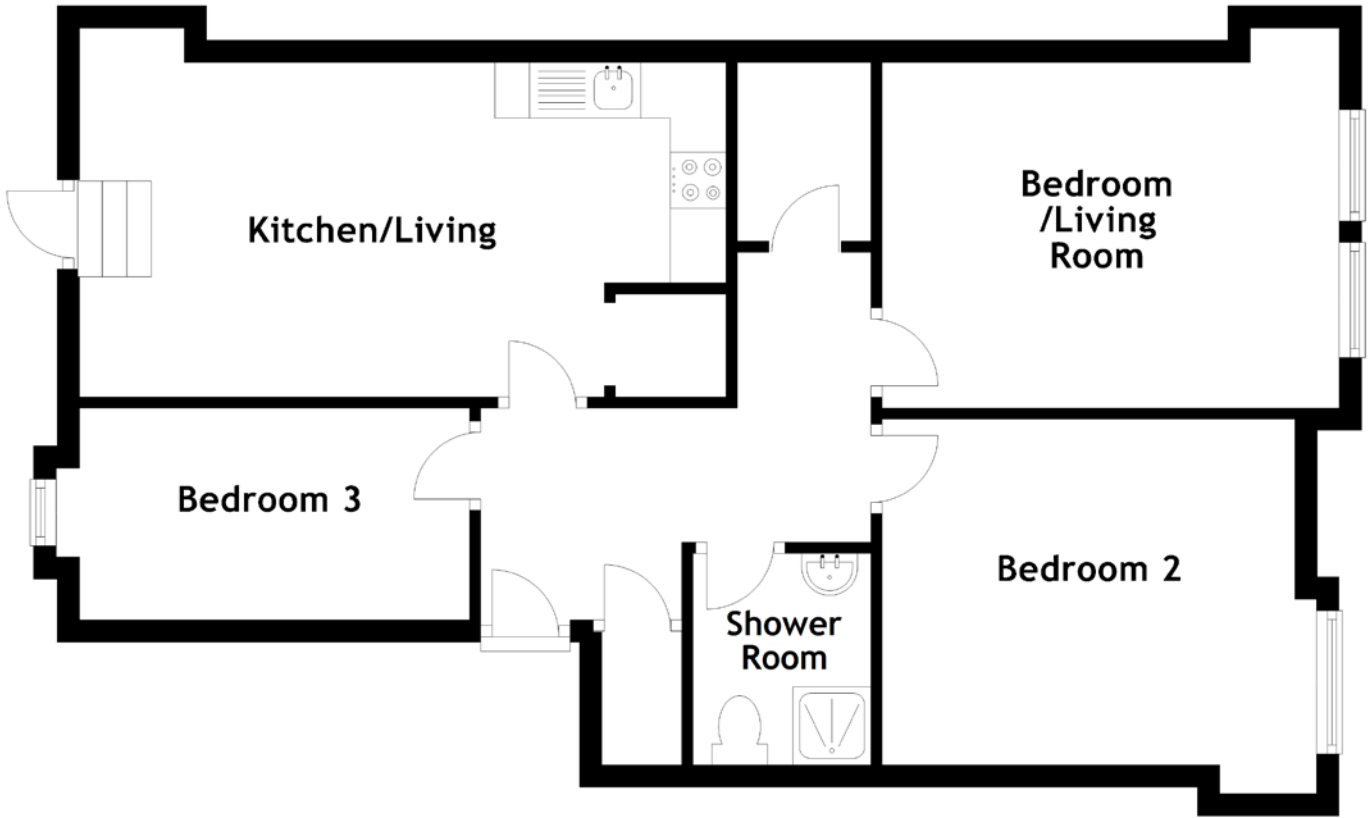


FLOOR PLAN, DIMENSIONS & MAP



Approximate Dimensions
(Taken from the widest point)

Kitchen/Living
Shower Room

5.80m (19') x 3.00m (9'10")
1.90m (6'3") x 1.60m (5'3")

Bedroom/Living Room 4.10m (13'5") x 3.10m (10'2")
Bedroom 2 3.70m (12'2") x 3.10m (10'2")
Bedroom 3 3.50m (11'6") x 1.90m (6'3")

Gross internal floor area (m²): 65m²

EPC Rating: C

