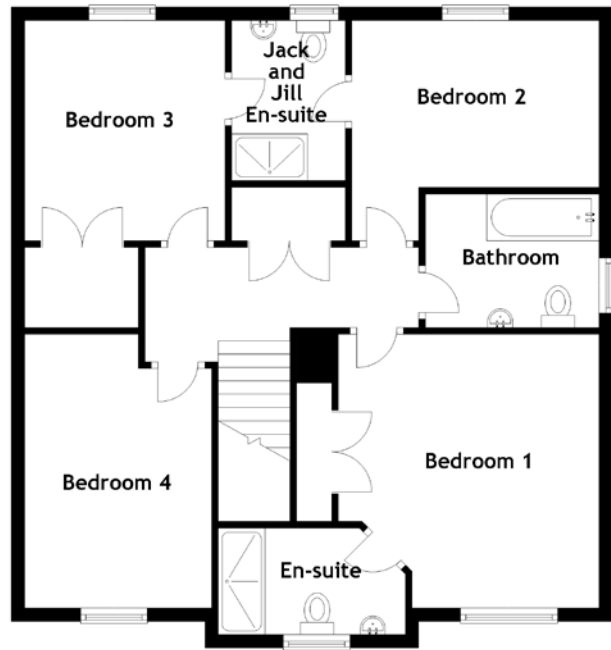
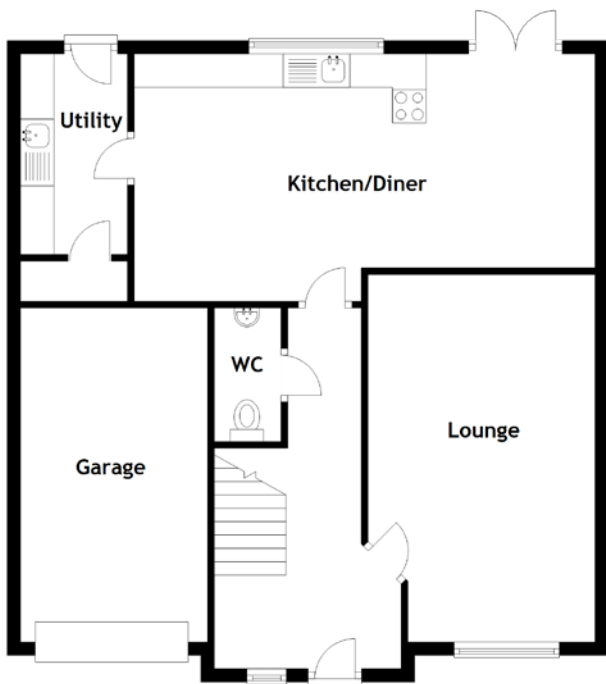


FLOOR PLAN, DIMENSIONS & MAP



Approximate Dimensions (Taken from the widest point)

Lounge	5.50m (18'1") x 3.40m (11'2")
Kitchen/Diner	6.90m (22'8") x 3.70m (12'2")
Utility	3.00m (9'10") x 1.60m (5'3")
WC	2.00m (6'7") x 1.00m (3'3")
Bedroom 1	4.10m (13'5") x 3.90m (12'10")
En-suite	2.80m (9'2") x 1.60m (5'3")

Bedroom 2	3.80m (12'6") x 3.30m (10'10")
Jack and Jill En-suite	2.40m (7'10") x 1.70m (5'7")
Bedroom 3	3.30m (10'10") x 3.00m (9'10")
Bedroom 4	4.10m (13'5") x 2.80m (9'2")
Bathroom	2.60m (8'6") x 2.00m (6'7")

Gross internal floor area (m²): 137m²
EPC Rating: C

