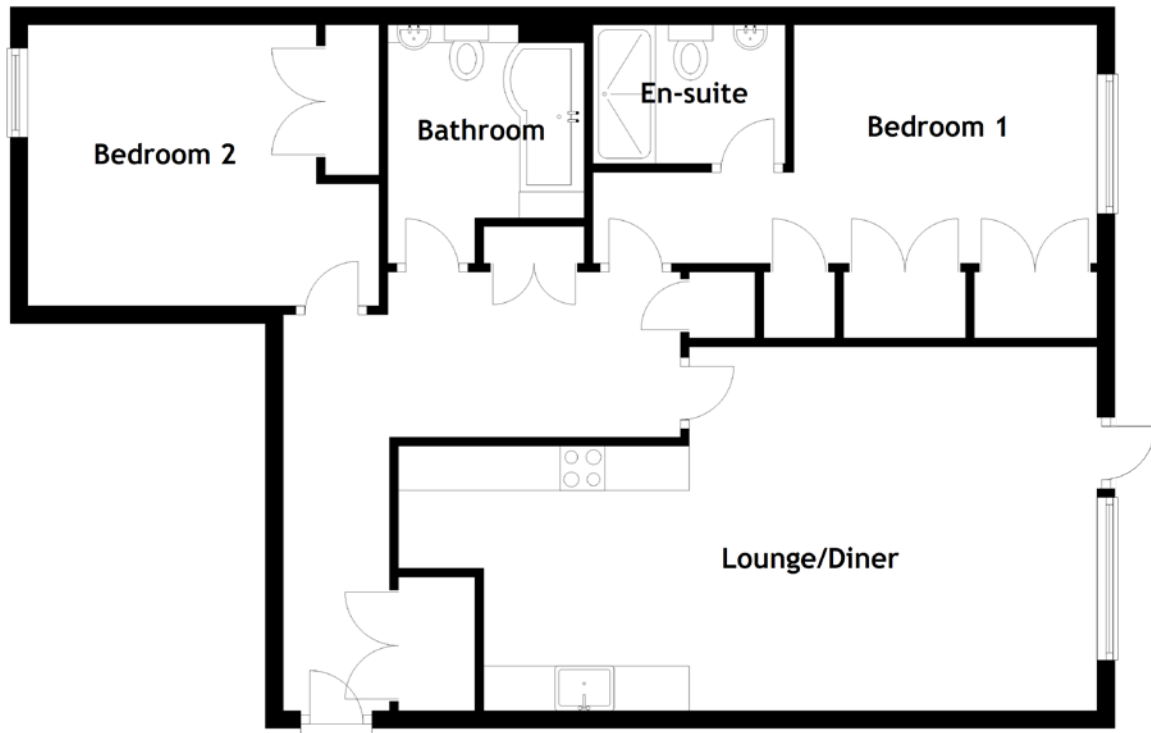


FLOOR PLAN, DIMENSIONS & MAP



Approximate Dimensions (Taken from the widest point)

Lounge/Kitchen

6.90m (22'8") x 4.08m (13'5")

Bedroom 1

5.60m (18'4") x 2.82m (9'3")

En-suite

2.16m (7'1") x 1.56m (5'1")

Bedroom 2

3.95m (13') x 3.16m (10'4")

Bathroom

2.68m (8'10") x 2.21m (7'3")

Gross internal floor area (m²): 80m²

EPC Rating: C

