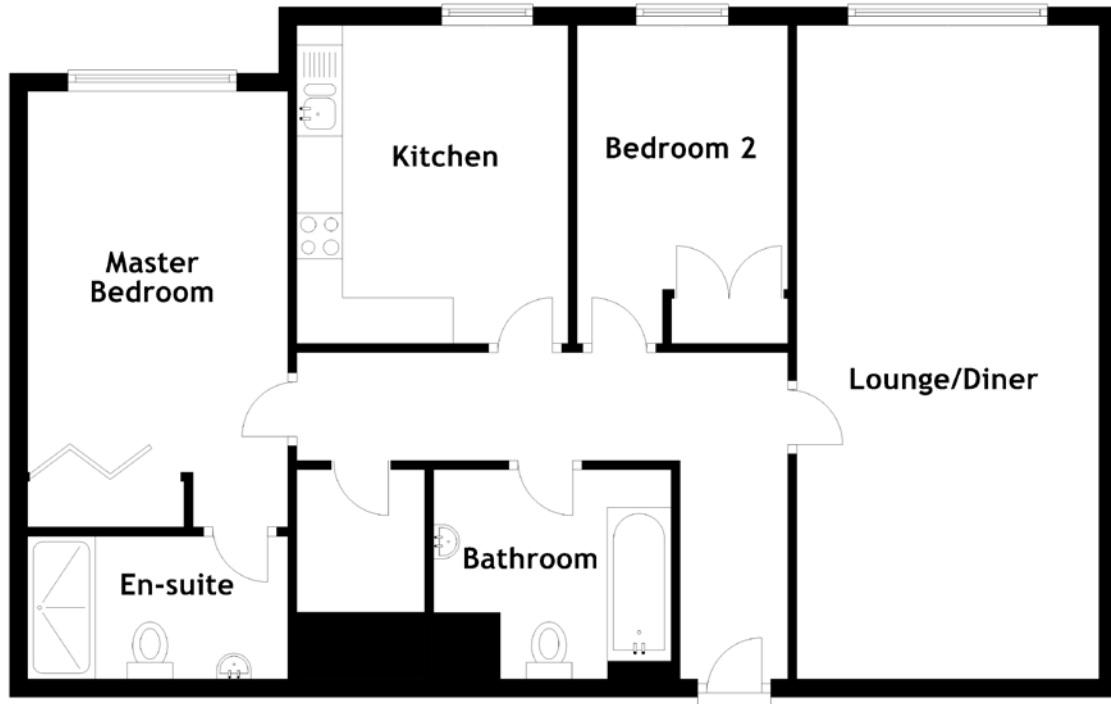


FLOOR PLAN, DIMENSIONS & MAP



Approximate Dimensions
(Taken from the widest point)

Lounge/Diner 7.16m (23'6") x 3.31m (10'10")
Kitchen 3.48m (11'5") x 2.97m (9'9")
Master Bedroom 4.77m (15'8") x 2.85m (9'4")

En-suite 2.85m (9'4") x 1.56m (5'1")
Bedroom 2 3.48m (11'5") x 2.31m (7'7")
Bathroom 2.60m (8'6") x 2.29m (7'6")

Gross internal floor area (m²): 87m²
EPC Rating: B

