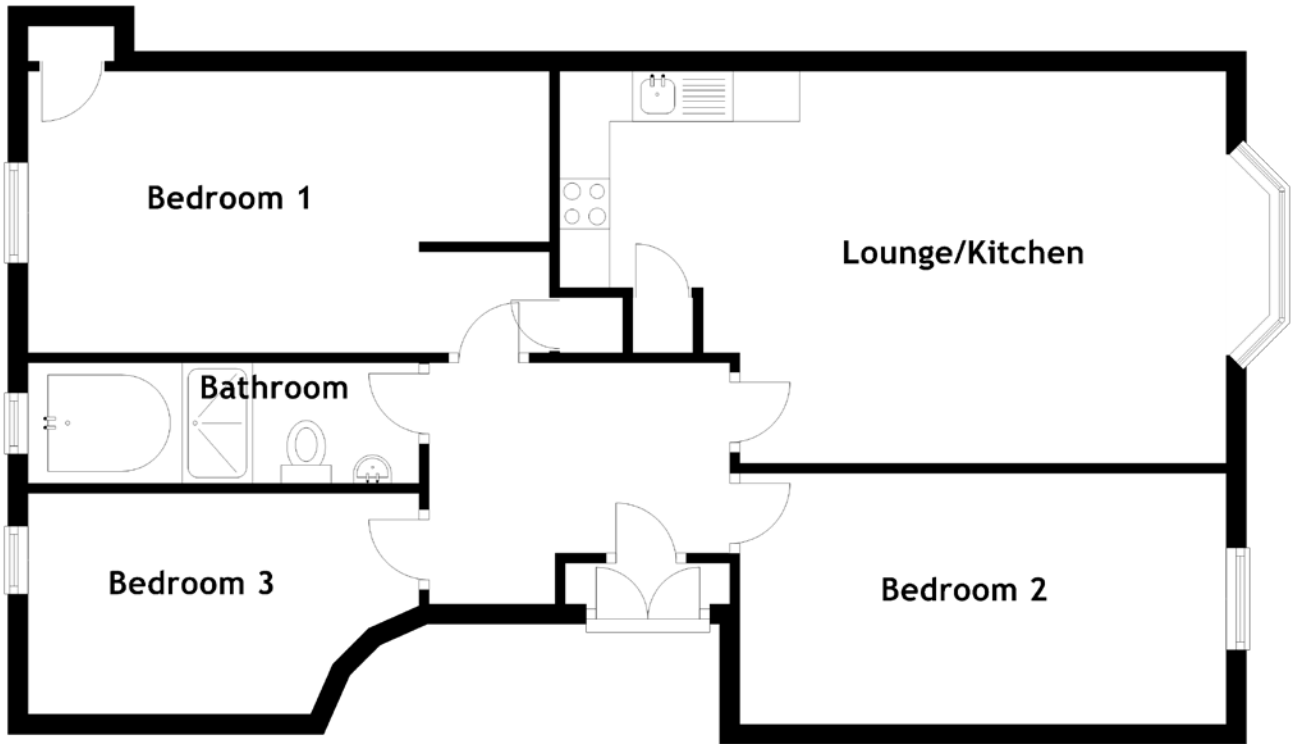


# FLOOR PLAN, DIMENSIONS & MAP



Approximate Dimensions  
(Taken from the widest point)

|                |                                 |
|----------------|---------------------------------|
| Lounge/Kitchen | 6.65m (21'10") x 3.90m (12'10") |
| Bedroom 1      | 5.20m (17'1") x 2.80m (9'2")    |
| Bedroom 2      | 4.85m (15'11") x 2.50m (8'2")   |
| Bedroom 3      | 3.90m (12'10") x 2.20m (7'3")   |

Bathroom 3.90m (12'10") x 1.20m (3'11")

Gross internal floor area (m<sup>2</sup>): 80m<sup>2</sup>

EPC Rating: D

Extras (Included in the sale): Carpets and floor coverings, light fixtures and fittings.

