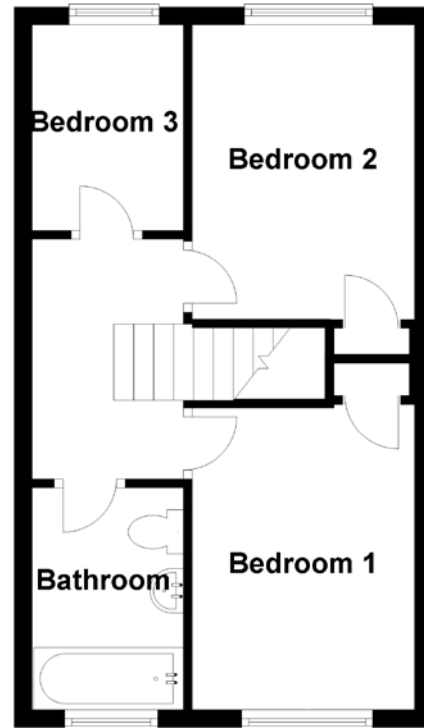
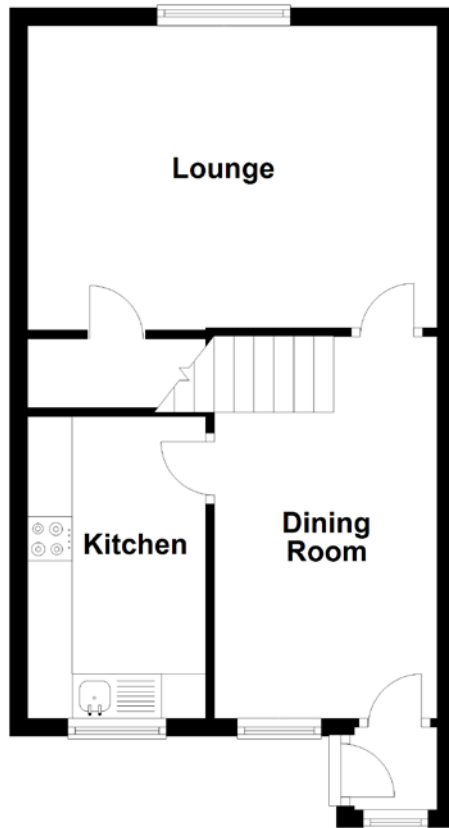


FLOOR PLAN, DIMENSIONS & MAP



Approximate Dimensions (Taken from the widest point)

Dining Room	4.30m (14'1") x 2.50m (8'2")
Kitchen	3.40m (11'2") x 2.00m (6'7")
Lounge	4.60m (15'1") x 3.40m (11'2")
Bedroom 1	3.40m (11'2") x 2.50m (8'2")

Bedroom 2	3.40m (11'2") x 2.50m (8'2")
Bedroom 3	2.50m (8'2") x 1.70m (5'7")
Bathroom	2.50m (8'2") x 1.70m (5'7")

Gross internal floor area (m²): 72m²
EPC Rating: C

