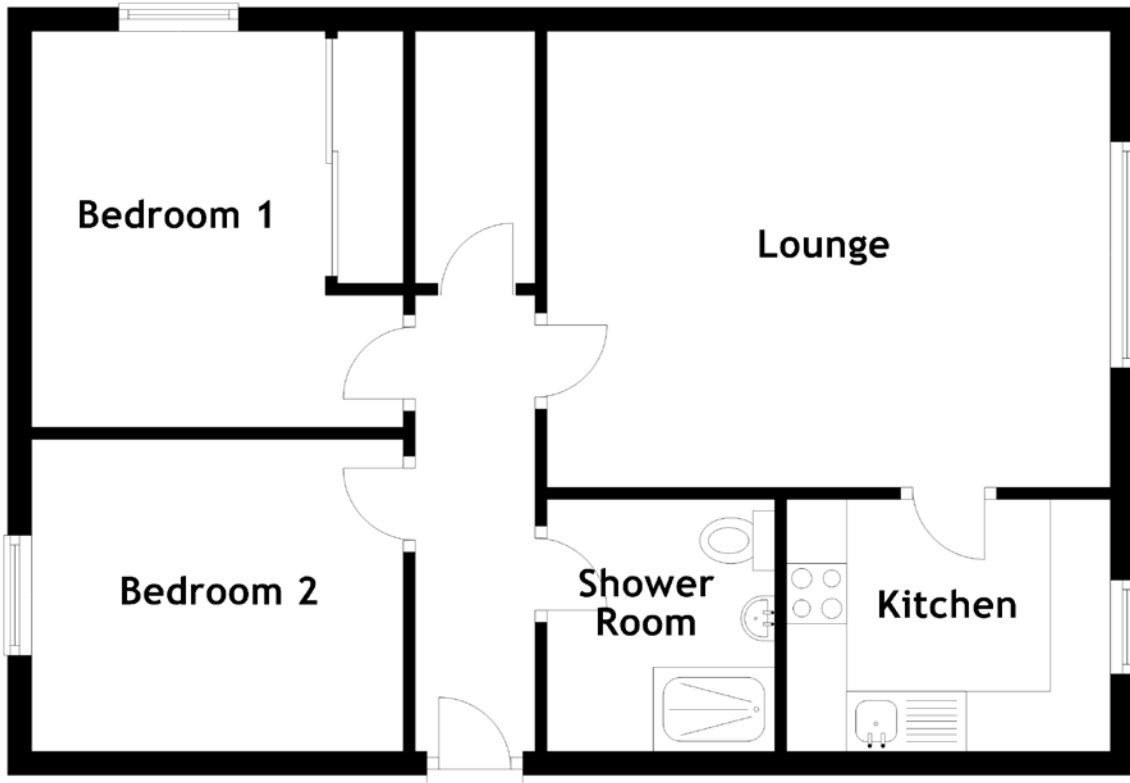


FLOOR PLAN, DIMENSIONS & MAP



Approximate Dimensions (Taken from the widest point)

Lounge 4.70m (15'5") x 3.80m (12'6")
Kitchen 2.70m (8'10") x 2.10m (6'11")
Bedroom 1 3.30m (10'10") x 3.10m (10'2")

Bedroom 2 3.10m (10'2") x 2.60m (8'6")
Shower Room 2.10m (6'11") x 2.00m (6'7")

Gross internal floor area (m²): 56m²
EPC Rating: D

