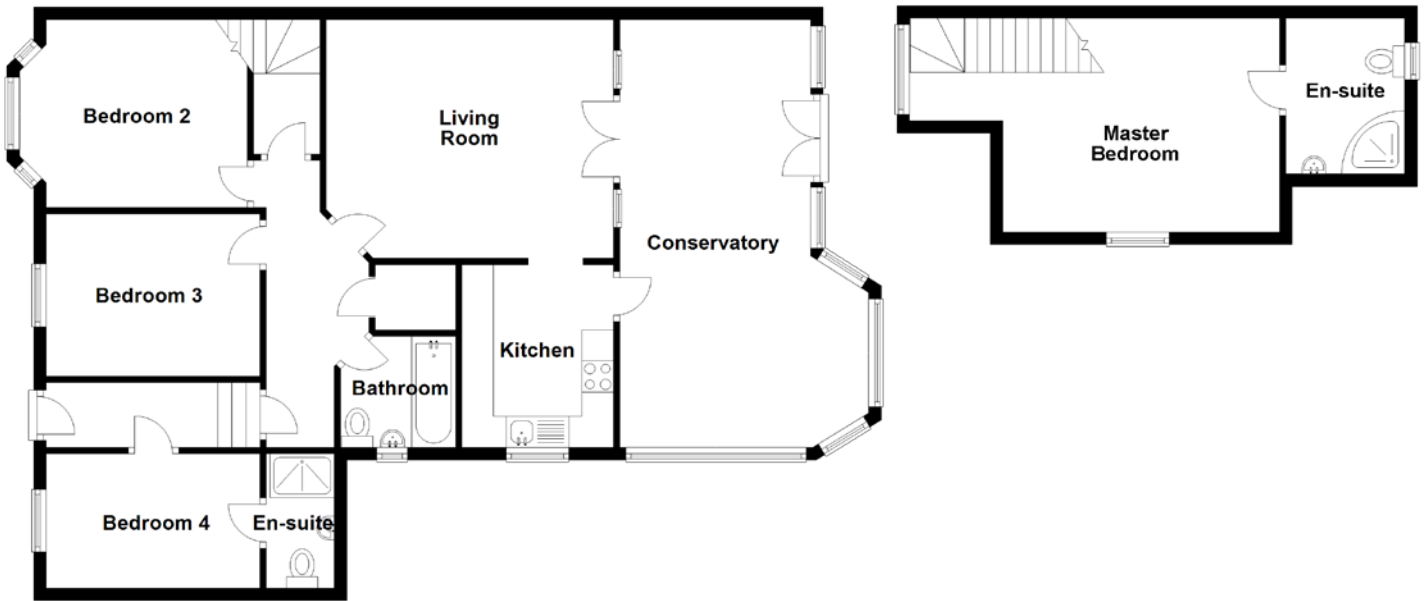


FLOOR PLAN, DIMENSIONS & MAP



Approximate Dimensions (Taken from the widest point)

Living Room	4.57m (15') x 3.80m (12'6")
Conservatory	6.81m (22'4") x 3.96m (13')
Kitchen	3.00m (9'10") x 2.41m (7'11")
Bathroom	1.83m (6') x 1.77m (5'10")
Master Bedroom	5.89m (19'4") x 3.39m (11'2")
En-suite	2.47m (8'1") x 1.89m (6'2")

Bedroom 2	3.63m (11'11") x 2.99m (9'10")
Bedroom 3	3.50m (11'6") x 2.59m (8'6")
Bedroom 4	3.46m (11'4") x 2.14m (7')
En-suite	2.25m (7'5") x 0.89m (2'11")

Gross internal floor area (m²): 119m²

EPC Rating: C

