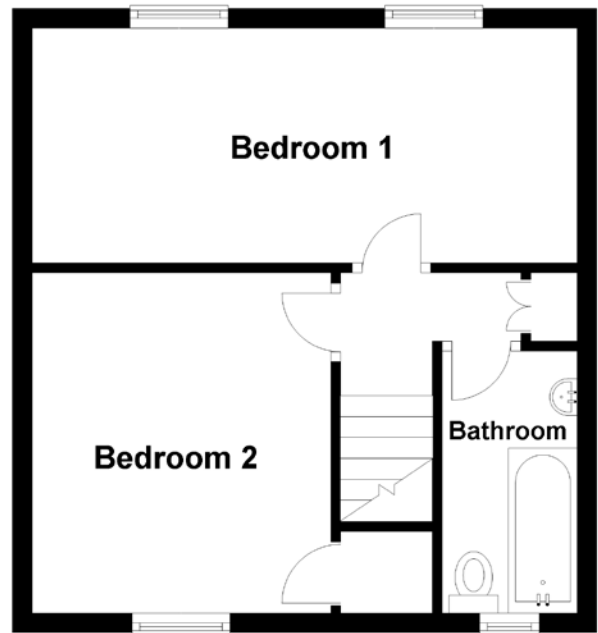
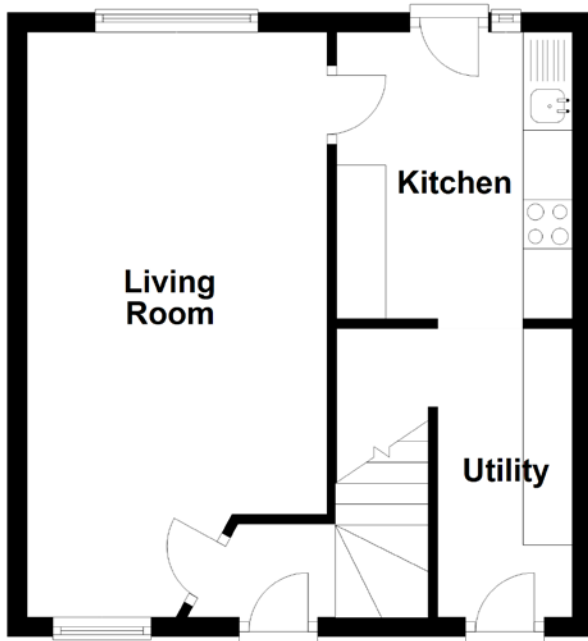


FLOOR PLAN, DIMENSIONS & MAP



Approximate Dimensions
(Taken from the widest point)

Living Room	5.96m (19'7") x 3.06m (10')
Kitchen	2.92m (9'7") x 2.40m (7'10")
Utility	2.79m (9'2") x 1.37m (4'6")

Bedroom 1	5.43m (17'10") x 2.39m (7'10")
Bedroom 2	3.49m (11'5") x 3.05m (10')
Bathroom	2.67m (8'9") x 1.38m (4'6")

Gross internal floor area (m²): 64m²
EPC Rating: D

