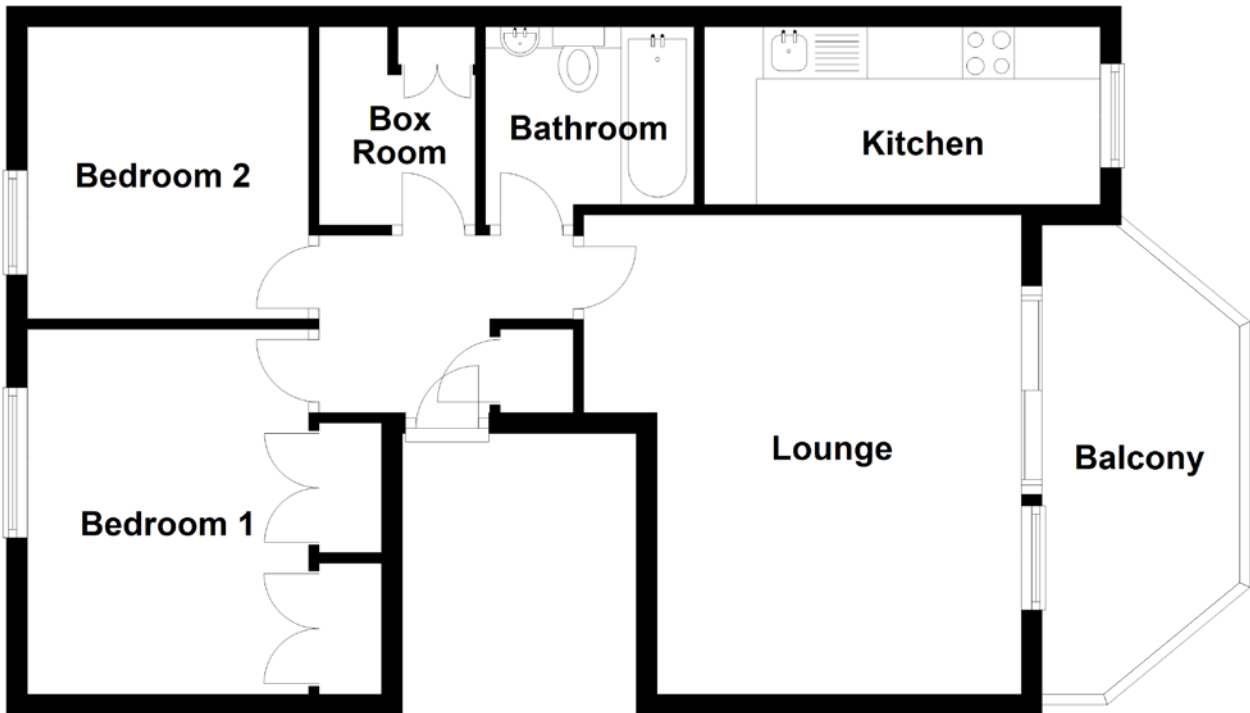


# FLOOR PLAN, DIMENSIONS & MAP



Approximate Dimensions (Taken from the widest point)

Lounge	4.60m (15'1") x 4.20m (13'9")
Balcony	4.60m (15'1") x 1.34m (4'5")
Kitchen	3.80m (12'6") x 1.70m (5'7")
Bathroom	2.00m (6'7") x 1.70m (5'7")

Bedroom 1	3.50m (11'6") x 2.70m (8'10")
Bedroom 2	2.80m (9'2") x 2.70m (8'10")
Box Room	1.90m (6'3") x 1.50m (4'11")

Gross internal floor area (m<sup>2</sup>): 56m<sup>2</sup>  
EPC Rating: C

