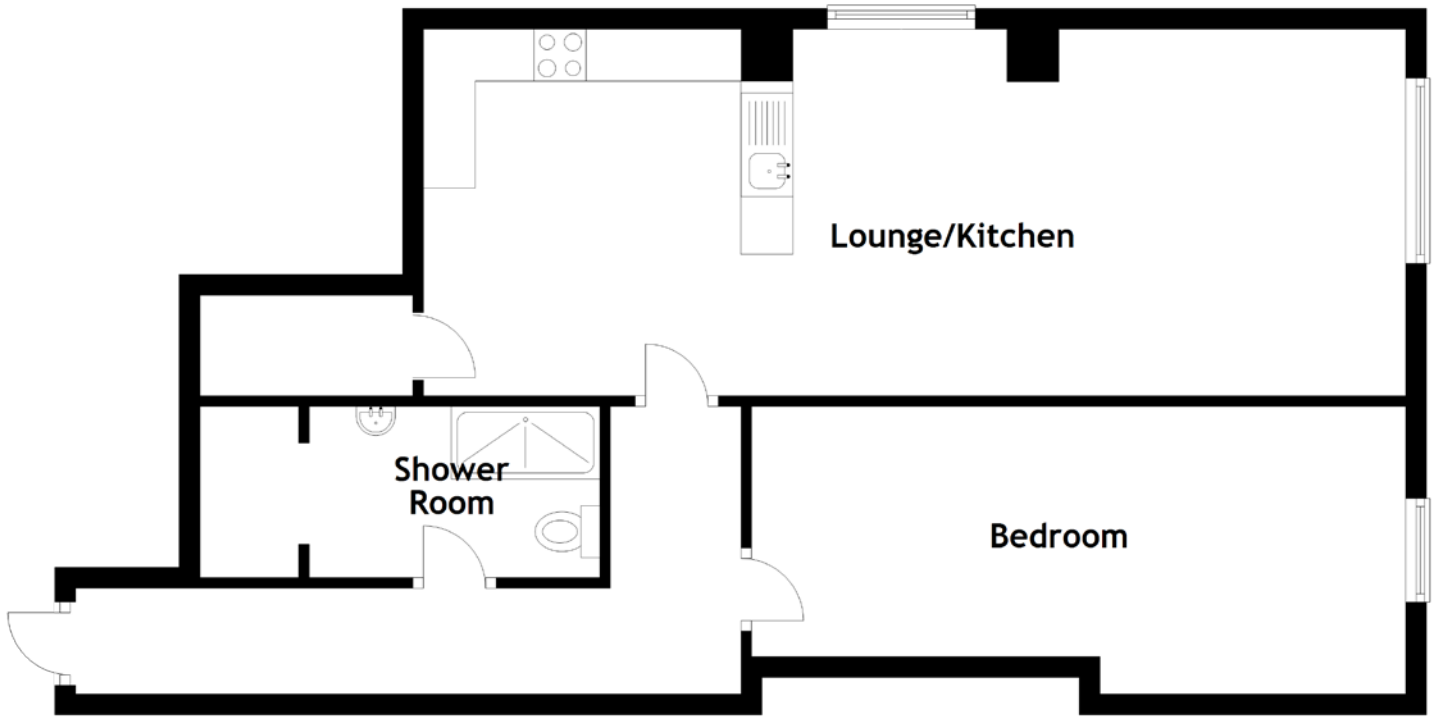


FLOOR PLAN, DIMENSIONS & MAP



Approximate Dimensions (Taken from the widest point)

Lounge/Kitchen
Bedroom

9.46m (31') x 3.53m (11'7")
6.30m (20'8") x 2.77m (9'1")

Shower Room

2.80m (9'2") x 1.65m (5'5")

Gross internal floor area (m²): 77m²
EPC Rating: D

