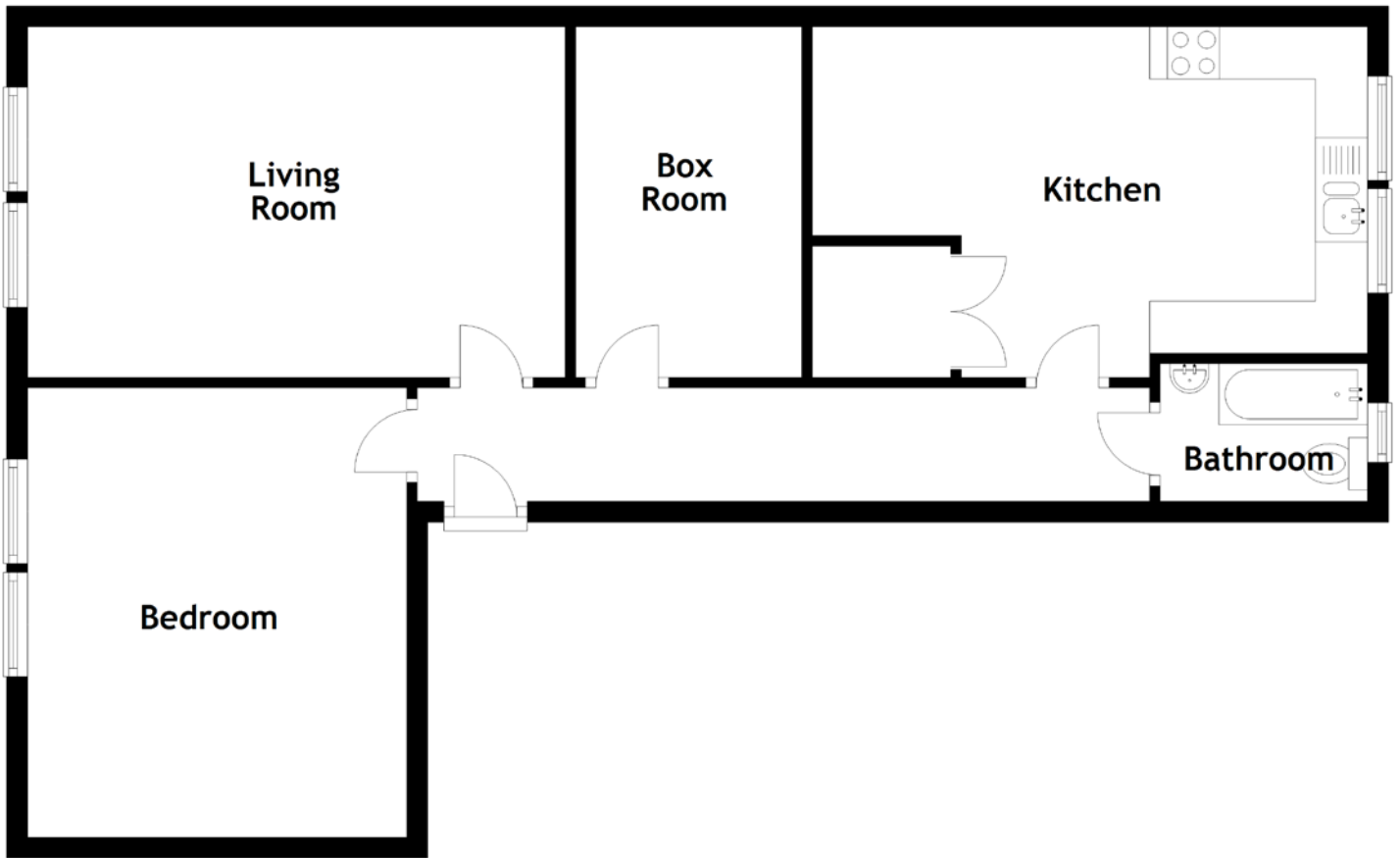


# FLOOR PLAN, DIMENSIONS & MAP



Approximate Dimensions (Taken from the widest point)

Living Room 5.16m (16'11") x 3.36m (11')  
 Kitchen 5.33m (17'6") x 3.13m (10'3")  
 Bedroom 4.31m (14'2") x 3.64m (11'11")

Box Room  
 Bathroom

3.36m (11') x 2.17m (7'1")  
 1.99m (6'6") x 1.32m (4'4")

Gross internal floor area (m<sup>2</sup>): 70m<sup>2</sup>  
 EPC Rating: E

