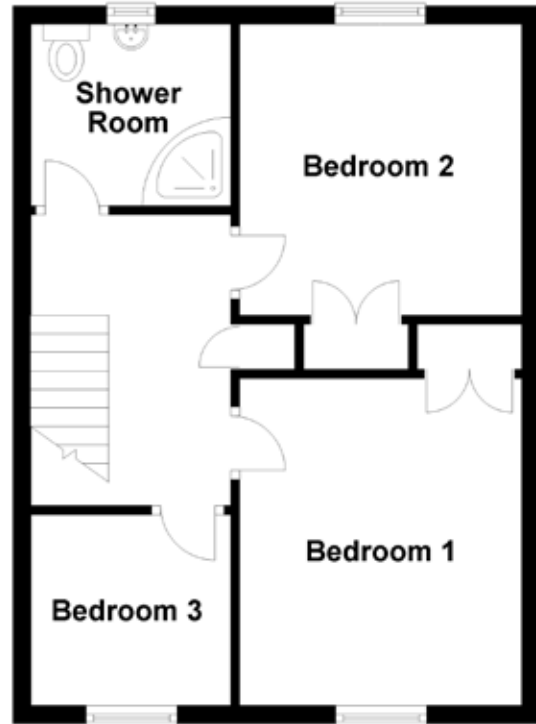
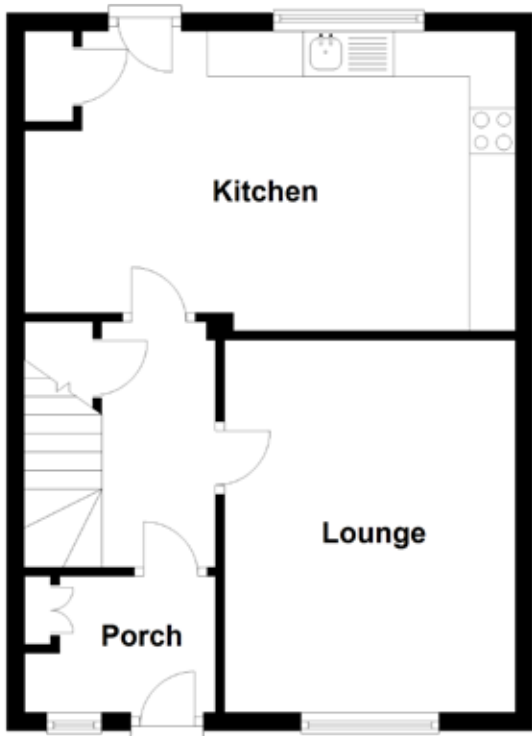


FLOOR PLAN, DIMENSIONS & MAP



Approximate Dimensions
(Taken from the widest point)

| | |
|-------------|--------------------------------|
| Porch | 2.10m (6'11") x 1.50m (4'11") |
| Lounge | 4.10m (13'5") x 3.20m (10'6") |
| Kitchen | 5.40m (17'9") x 3.30m (10'10") |
| Shower Room | 2.00m (6'7") x 2.00m (6'7") |
| Bedroom 1 | 3.60m (11'10") x 3.10m (10'2") |

| | |
|-----------|-------------------------------|
| Bedroom 2 | 3.20m (10'6") x 3.10m (10'2") |
| Bedroom 3 | 2.10m (6'11") x 2.00m (6'7") |

Gross internal floor area (m²): 80m²
EPC Rating: C

Extras (Included in the sale): All fitted floor coverings, curtains, blinds and light fittings.

