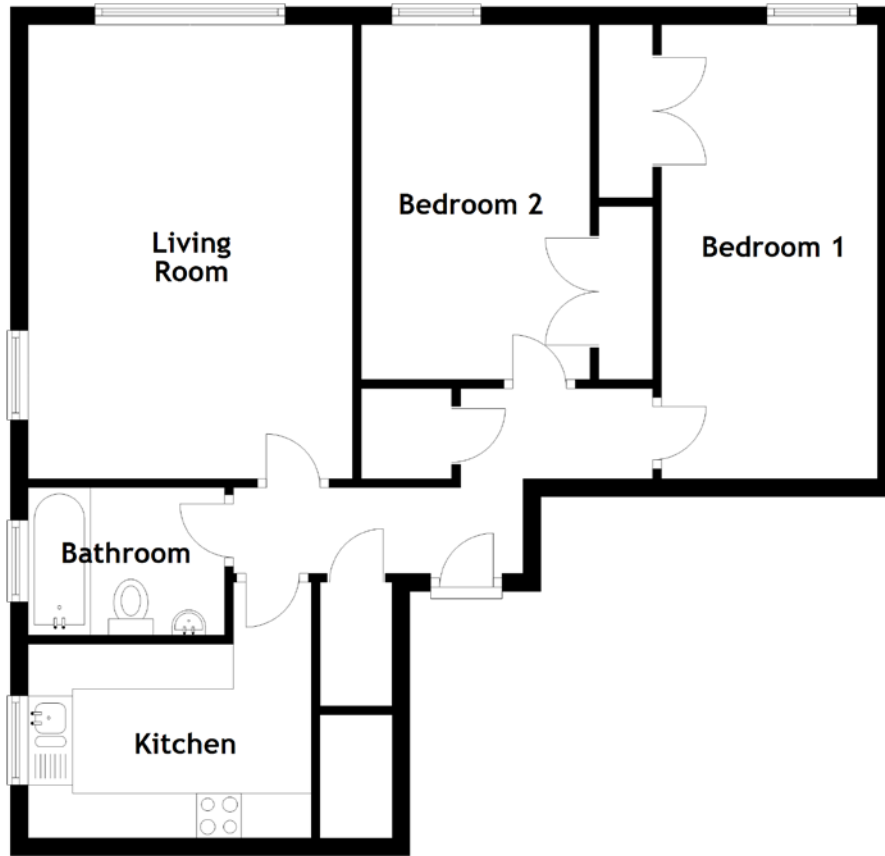


FLOOR PLAN, DIMENSIONS & MAP



Approximate Dimensions
(Taken from the widest point)

Living Room 5.08m (16'8") x 3.63m (11'11")
Kitchen 3.17m (10'5") x 2.86m (9'5")

Bedroom 1 4.97m (16'4") x 2.42m (7'11")
Bedroom 2 3.97m (13') x 2.56m (8'5")
Bathroom 2.20m (7'3") x 1.65m (5'5")

Gross internal floor area (m²): 67m² | EPC Rating: D

