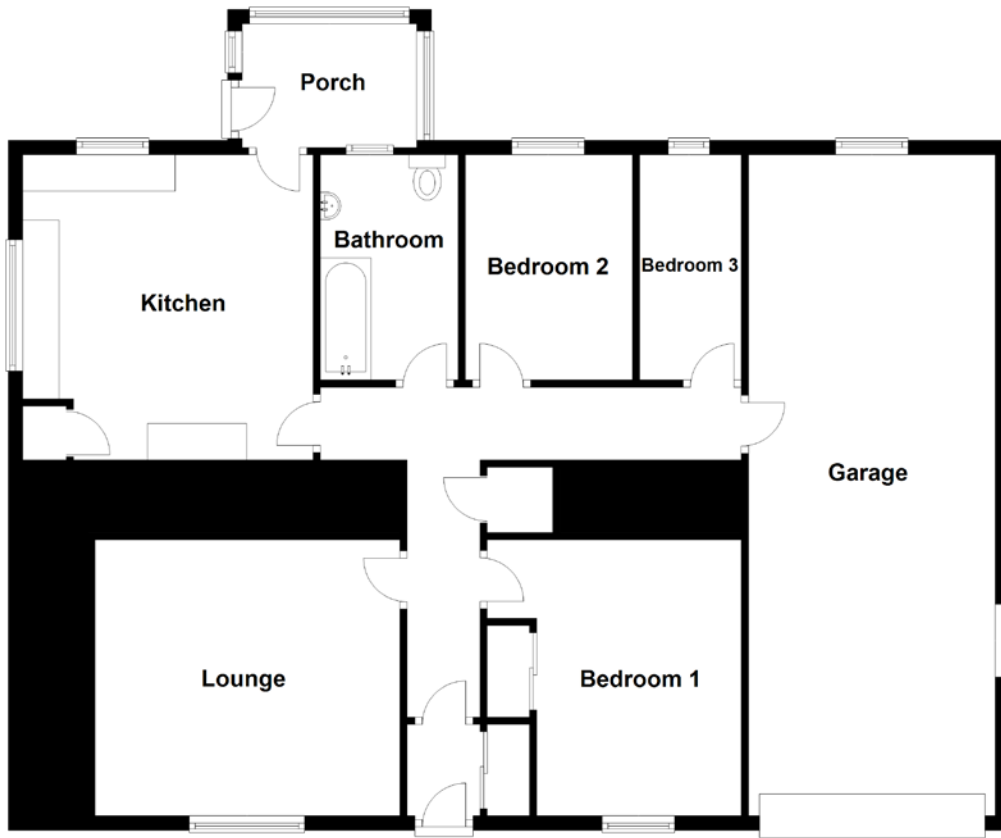


FLOOR PLAN, DIMENSIONS & MAP



Approximate Dimensions (Taken from the widest point)

Lounge	4.20m (13'9") x 3.80m (12'6")
Kitchen	4.20m (13'9") x 4.00m (13'1")
Bedroom 1	3.80m (12'6") x 3.50m (11'6")
Bedroom 2	3.10m (10'2") x 2.30m (7'7")

Bedroom 3	3.10m (10'2") x 1.40m (4'7")
Bathroom	3.10m (10'2") x 1.90m (6'3")
Porch	2.40m (7'11") x 1.70m (5'7")
Garage	9.10m (29'10") x 3.40m (11'2")

Gross internal floor area (m²): 76m² | EPC Rating: E

