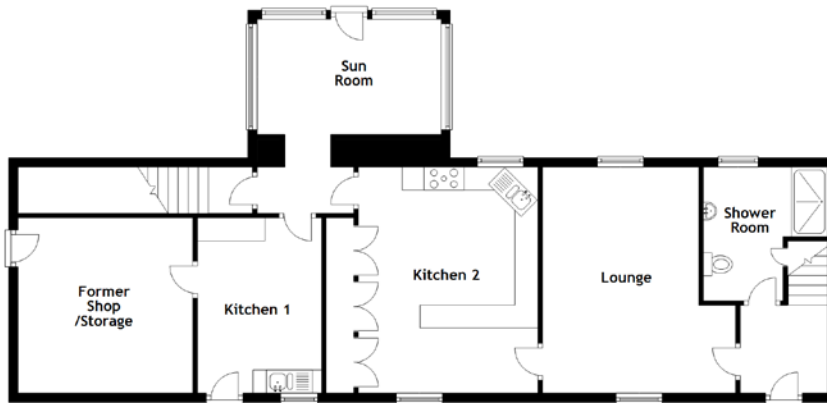


FLOOR PLAN, DIMENSIONS & MAP



Approximate Dimensions (Taken from the widest point)

Lounge	6.80m (22'4") x 4.20m (13'9")
Former Shop/Storage	3.80m (12'6") x 3.80m (12'6")
Kitchen 1	3.80m (12'6") x 2.70m (8'10")
Kitchen 2	4.90m (16'1") x 3.90m (12'10")
Sun Room	4.00m (13'1") x 2.50m (8'3")
Shower Room	2.90m (9'6") x 2.70m (8'10")

Bedroom 1	5.70m (18'9") x 4.90m (16'1")
En-suite	3.90m (12'10") x 2.60m (8'6")
Bedroom 2	4.70m (15'5") x 3.70m (12'2")
Bedroom 3	4.30m (14'1") x 3.80m (12'6")
Bedroom 4	5.40m (17'9") x 2.30m (7'7")
Bedroom 5	4.00m (13'2") x 3.00m (9'10")

Gross internal floor area (m²): 200m² | EPC Rating: E

