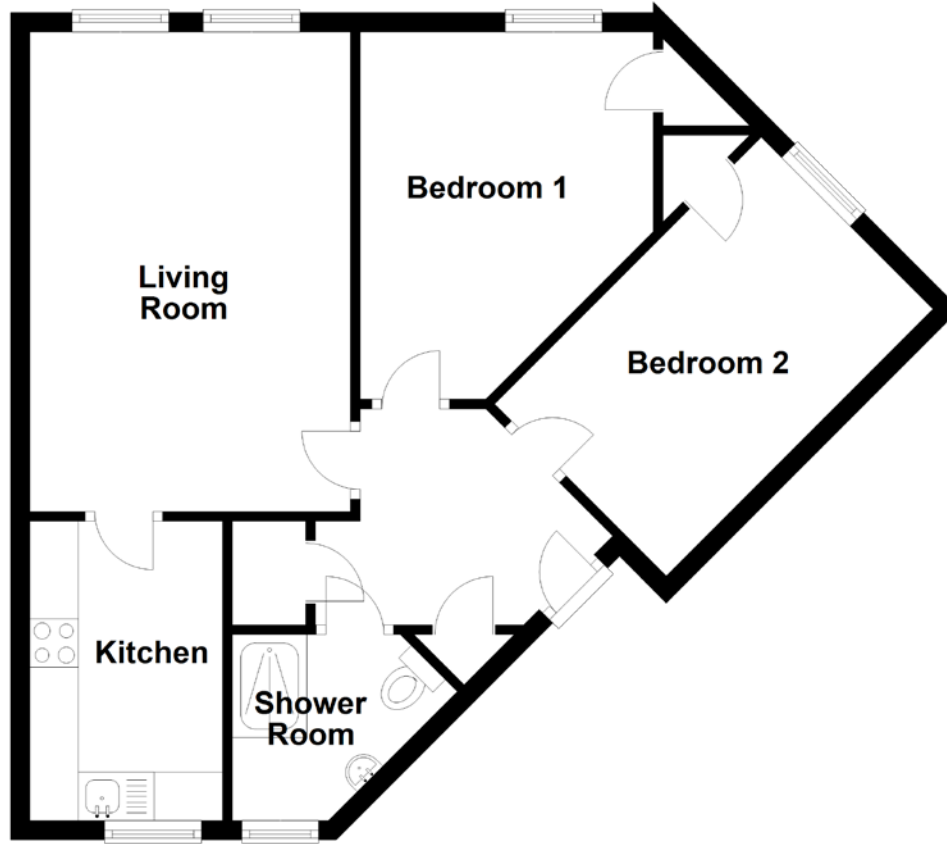


FLOOR PLAN, DIMENSIONS & MAP



Approximate Dimensions (Taken from the widest point)

Living Room 4.95m (16'3") x 3.31m (10'10")
 Kitchen 3.09m (10'2") x 1.99m (6'6")
 Bedroom 1 3.79m (12'5") x 3.03m (9'11")

Bedroom 2 3.71m (12'2") x 2.51m (8'3")
 Shower Room 2.35m (7'9") x 1.92m (6'4")

Gross internal floor area (m²): 54m²
 EPC Rating: C

