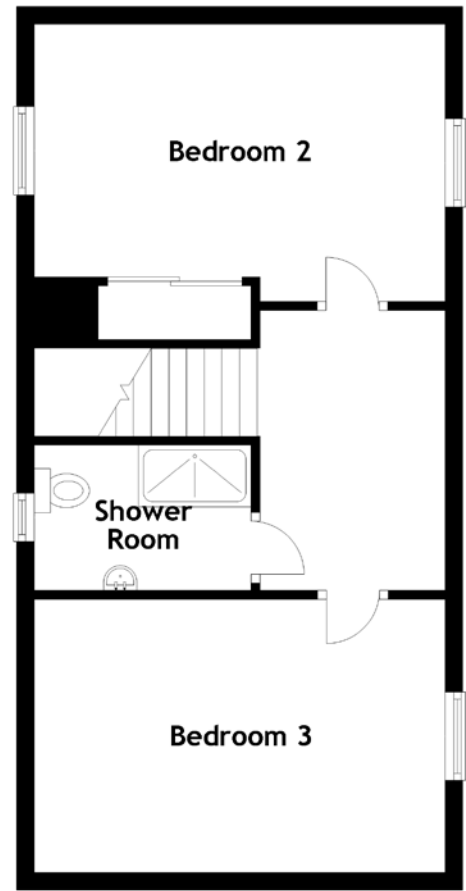
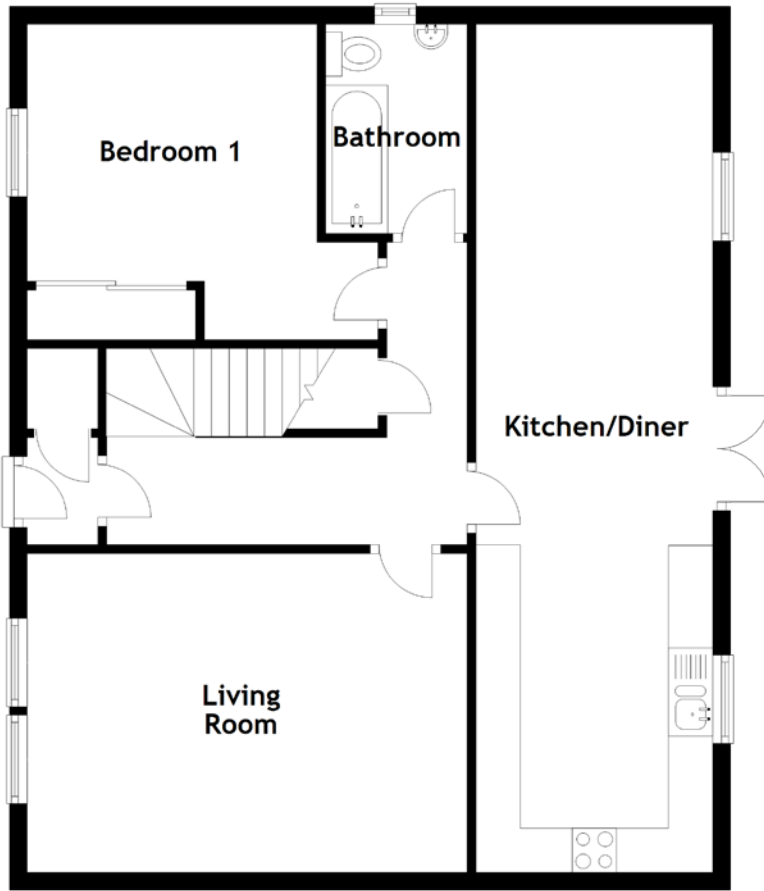


FLOOR PLAN, DIMENSIONS & MAP



Approximate Dimensions (Taken from the widest point)

Living Room	4.98m (16'4") x 3.61m (11'10")
Kitchen/Diner	9.62m (31'7") x 2.68m (8'10")
Bathroom	2.37m (7'9") x 1.60m (5'3")
Bedroom 1	3.98m (13'1") x 3.57m (11'9")

Bedroom 2	4.65m (15'3") x 3.14m (10'4")
Bedroom 3	4.65m (15'3") x 3.09m (10'2")
Shower Room	2.45m (8') x 1.80m (5'11")

Gross internal floor area (m²): 120m²
EPC Rating: B

