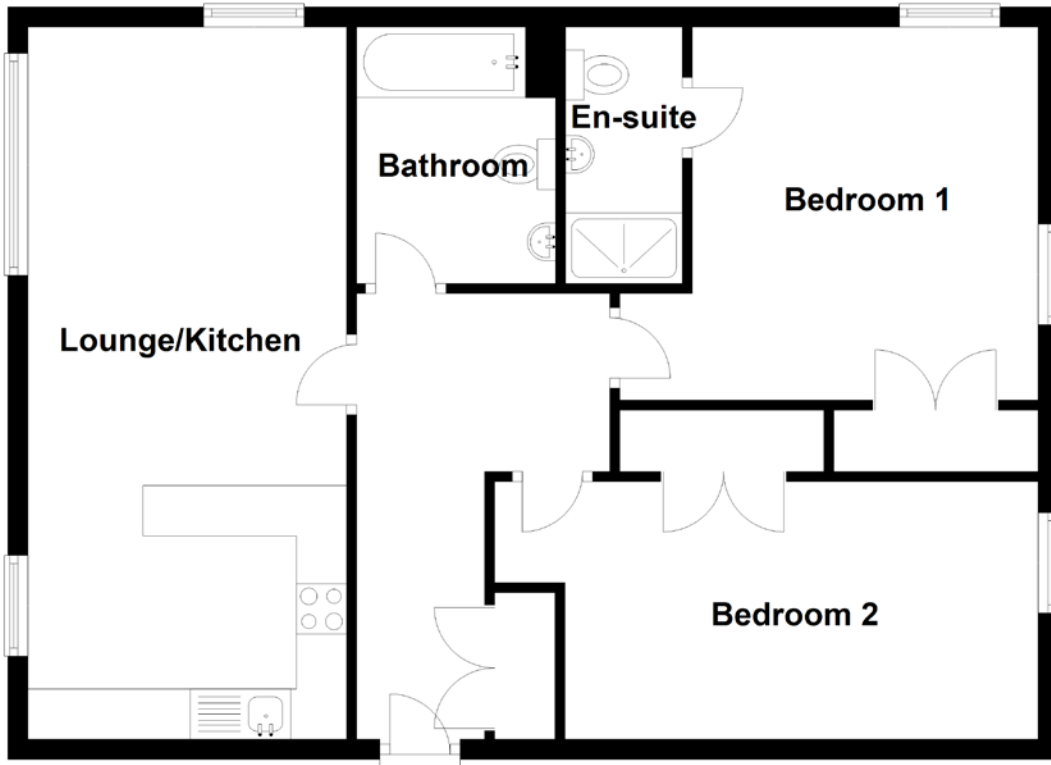


# FLOOR PLAN, DIMENSIONS & MAP



Approximate Dimensions (Taken from the widest point)

Lounge/Kitchen 7.08m (23'3") x 3.17m (10'5")  
 Bathroom 2.55m (8'4") x 1.98m (6'6")  
 Bedroom 1 4.16m (13'8") x 3.71m (12'2")

En-suite 2.55m (8'4") x 1.16m (3'10")  
 Bedroom 2 5.41m (17'9") x 2.56m (8'5")

Gross internal floor area (m<sup>2</sup>): 72m<sup>2</sup>  
 EPC Rating: C

