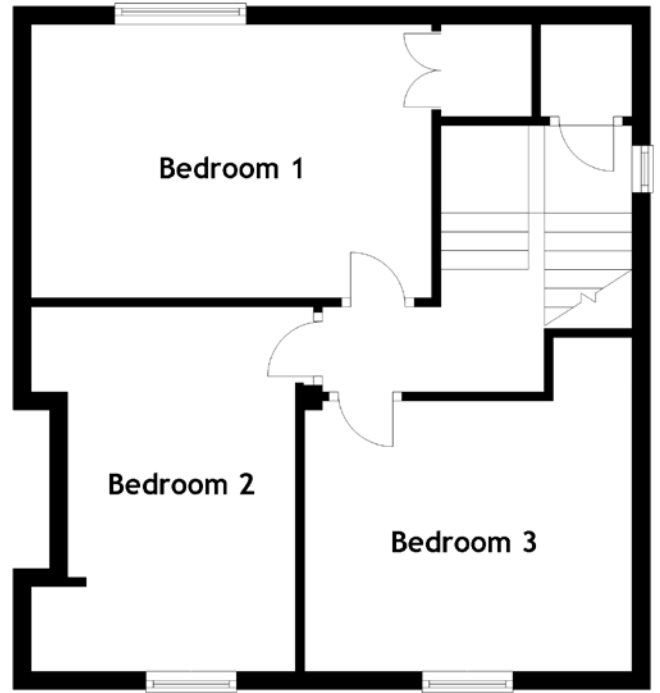
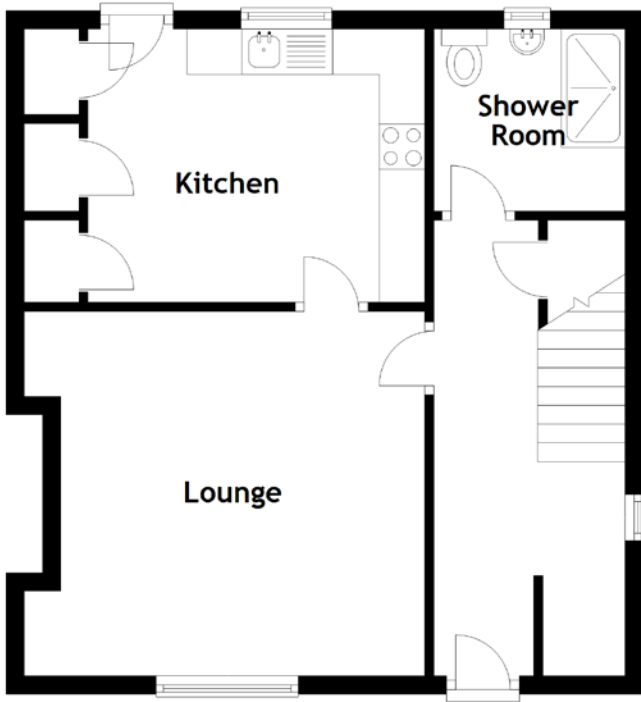


FLOOR PLAN, DIMENSIONS & MAP



Approximate Dimensions (Taken from the widest point)

Lounge	4.00m (13'1") x 4.00m (13'1")
Kitchen	3.70m (12'2") x 3.00m (9'10")
Shower Room	2.10m (6'11") x 2.00m (6'7")
Bedroom 1	4.30m (14'1") x 3.00m (9'10")
Bedroom 2	4.00m (13'1") x 3.10m (10'2")

Bedroom 3

3.60m (11'10") x 2.90m (9'6")

Gross internal floor area (m²): 94m²
EPC Rating: D

Extras (Included in the sale): Floor coverings, light fittings and window dressings.

