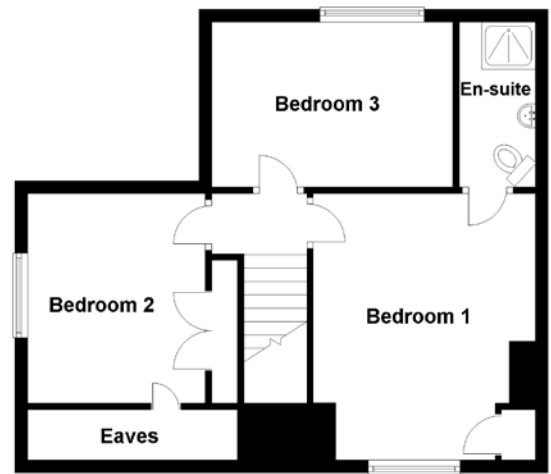
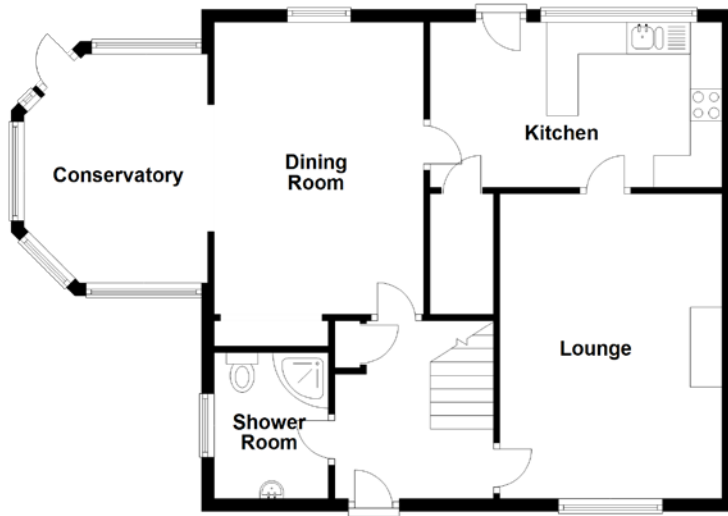


FLOOR PLAN, DIMENSIONS & MAP



Approximate Dimensions (Taken from the widest point)

Lounge	4.80m (15'9") x 3.50m (11'6")
Kitchen	4.60m (15'1") x 2.60m (8'6")
Dining Room	4.60m (15'1") x 3.30m (10'10")
Conservatory	3.60m (11'10") x 2.46m (8'1")
Shower Room	2.30m (7'7") x 1.80m (5'11")

Bedroom 1	4.20m (13'9") x 3.50m (11'6")
En-suite	2.50m (8'2") x 1.20m (3'11")
Bedroom 2	3.30m (10'10") x 2.70m (8'10")
Bedroom 3	3.80m (12'6") x 2.50m (8'2")

Gross internal floor area (m²): 107m²
EPC Rating: D

