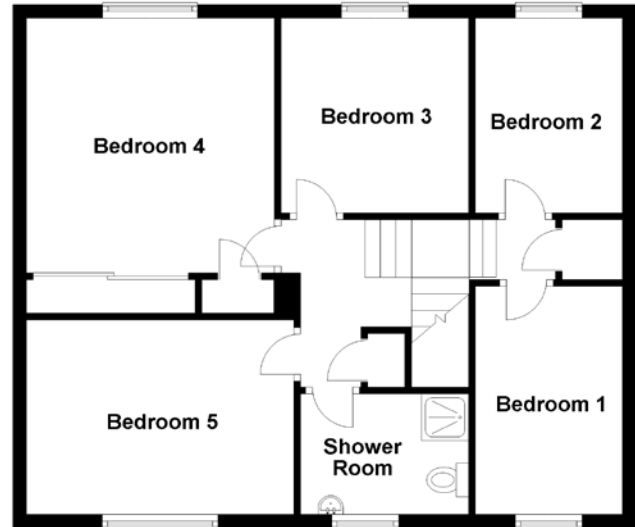
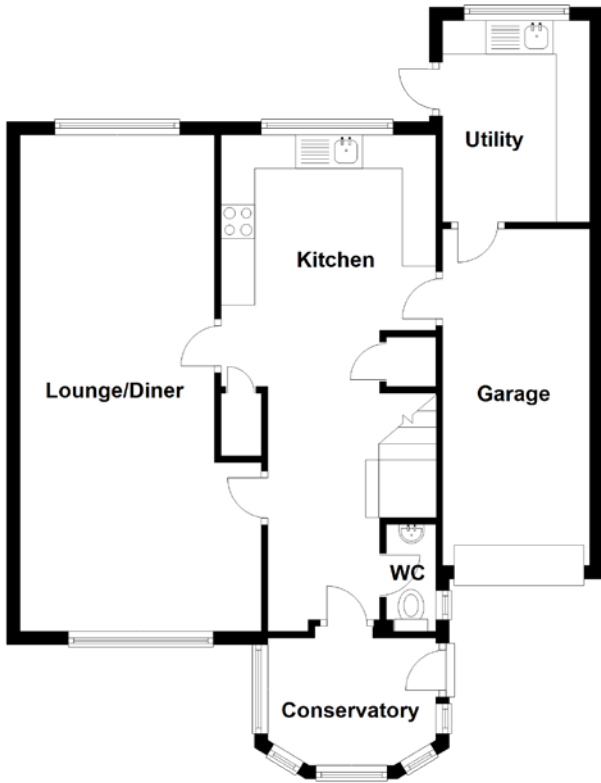


FLOOR PLAN, DIMENSIONS & MAP



Approximate Dimensions
(Taken from the widest point)

Lounge/Diner	12.29m (40'4") x 3.60m (11'10")
Kitchen	3.20m (10'6") x 3.00m (9'10")
Utility	3.00m (9'10") x 2.20m (7'2")
Conservatory	2.60m (8'7") x 1.90m (6'3")
Bedroom 1	3.40m (11'2") x 2.30m (7'7")

Bedroom 2	2.90m (9'6") x 2.30m (7'7")
Bedroom 3	2.90m (9'6") x 2.80m (9'2")
Bedroom 4	3.80m (12'6") x 3.70m (12'2")
Bedroom 5	4.00m (13'1") x 2.90m (9'6")
Shower Room	2.50m (8'2") x 1.80m (5'11")

Gross internal floor area (m²): 126m²
EPC Rating: C

