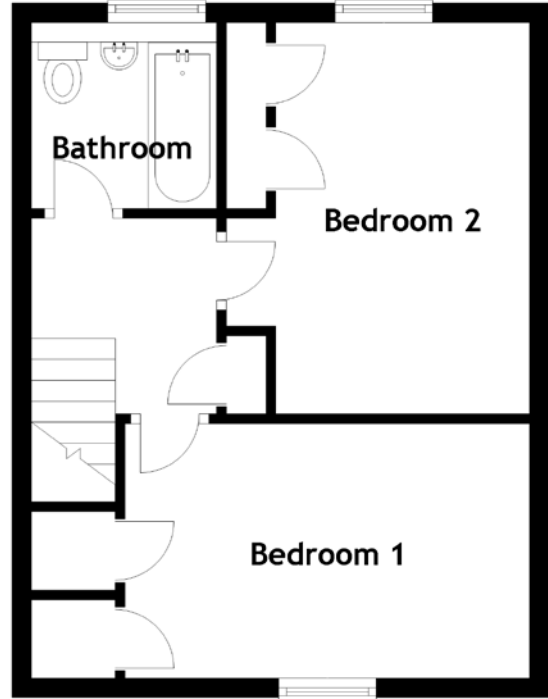
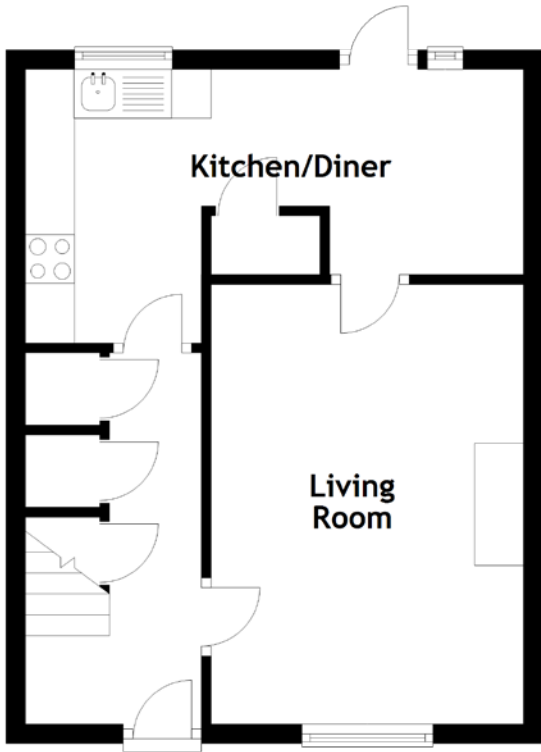


FLOOR PLAN, DIMENSIONS & MAP



Approximate Dimensions (Taken from the widest point)

Living Room 4.50m (14'9") x 3.20m (10'6")
 Kitchen/Diner 5.10m (16'9") x 2.10m (6'11")
 Bedroom 1 4.10m (13'5") x 2.60m (8'6")

Bedroom 2 4.00m (13'1") x 3.10m (10'2")
 Bathroom 1.90m (6'3") x 1.90m (6'3")

Gross internal floor area (m²): 69m²
 EPC Rating: C

