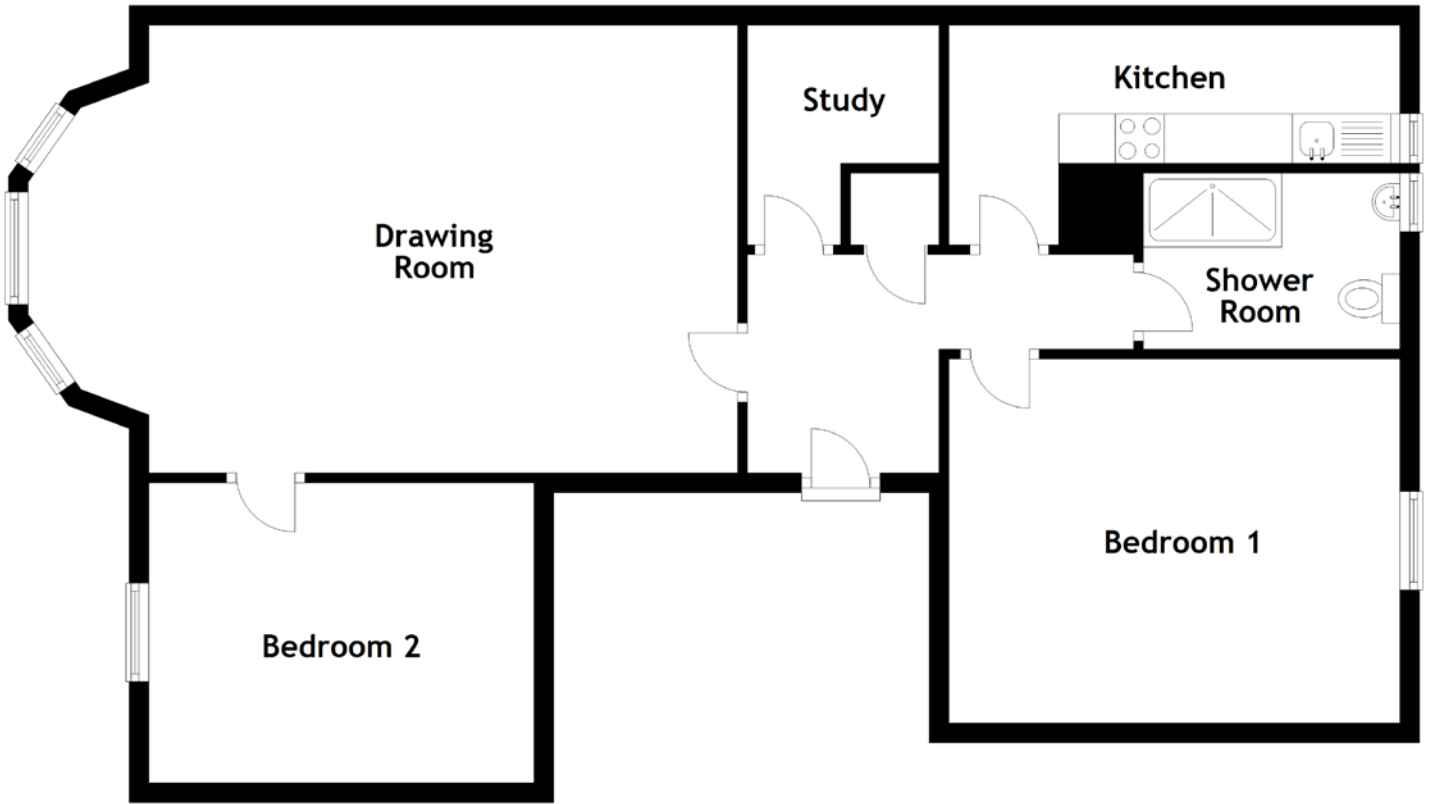


FLOOR PLAN, DIMENSIONS & MAP



Approximate Dimensions
(Taken from the widest point)

Drawing Room 7.22m (23'8") x 4.55m (14'11")
 Kitchen 4.59m (15'1") x 2.23m (7'4")
 Study 2.23m (7'4") x 1.95m (6'5")

Shower Room 2.61m (8'7") x 1.79m (5'10")
 Bedroom 1 4.57m (15') x 3.70m (12'2")
 Bedroom 2 3.92m (12'10") x 3.05m (10')

Gross internal floor area (m²): 84m²
 EPC Rating: C

VIRTUAL TOUR

