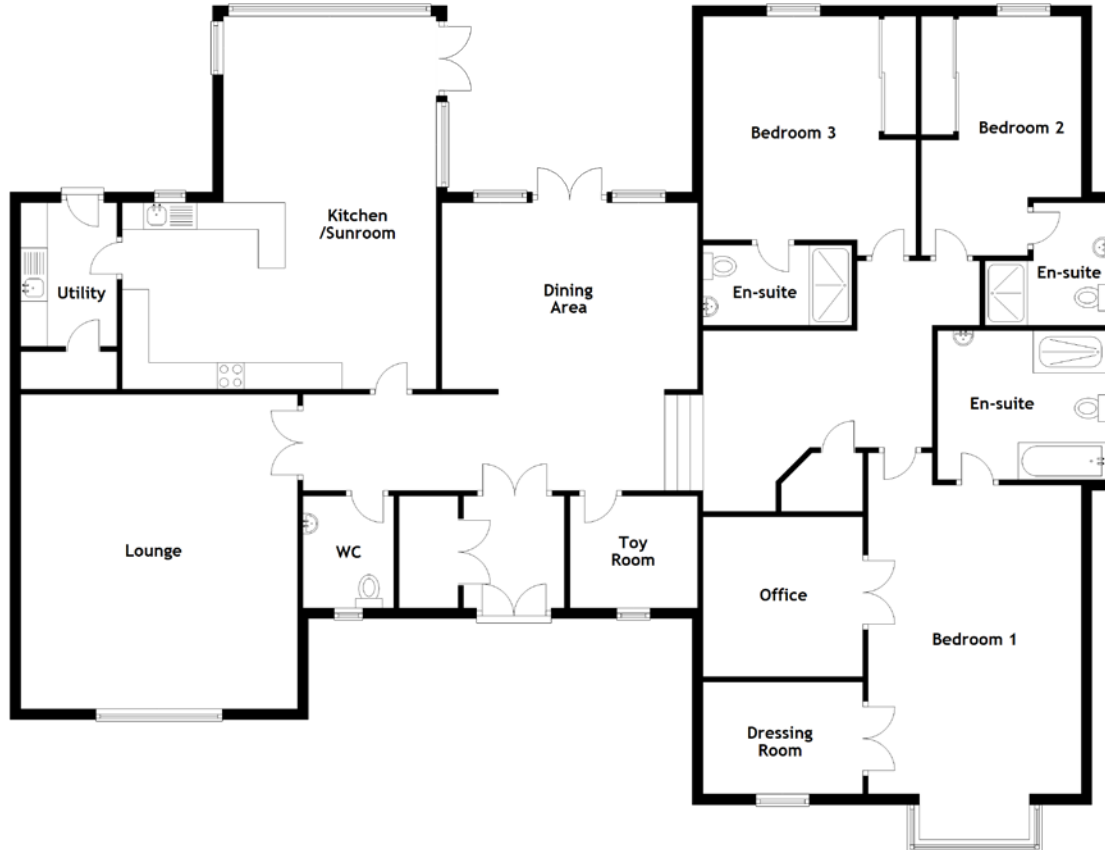


5 Kellieside Park

KINROSS, PERTHSHIRE, KY13 0NR



Approximate Dimensions
(Taken from the widest point)

Lounge	5.90m (19'4") x 5.20m (17'1")
Dining Area	4.80m (15'9") x 3.50m (11'6")
Kitchen/Sunroom	7.00m (23') x 5.90m (19'4")
Utility	2.70m (8'10") x 1.80m (5'11")
WC	2.10m (6'11") x 1.70m (5'7")
Toy Room	2.40m (7'10") x 2.10m (6'11")
Bedroom 1	6.40m (21') x 4.00m (13'1")
En-suite	3.20m (10'6") x 2.80m (9'2")
Dressing Room	3.00m (9'10") x 2.10m (6'11")
Office	3.00m (9'10") x 3.00m (9'10")
Bedroom 2	4.50m (14'9") x 3.00m (9'10")
En-suite	2.30m (7'7") x 2.30m (7'7")
Bedroom 3	4.50m (14'9") x 4.00m (13'2")
En-suite	2.80m (9'2") x 1.50m (4'11")

Gross internal floor area (m²): 223m²

EPC Rating: D