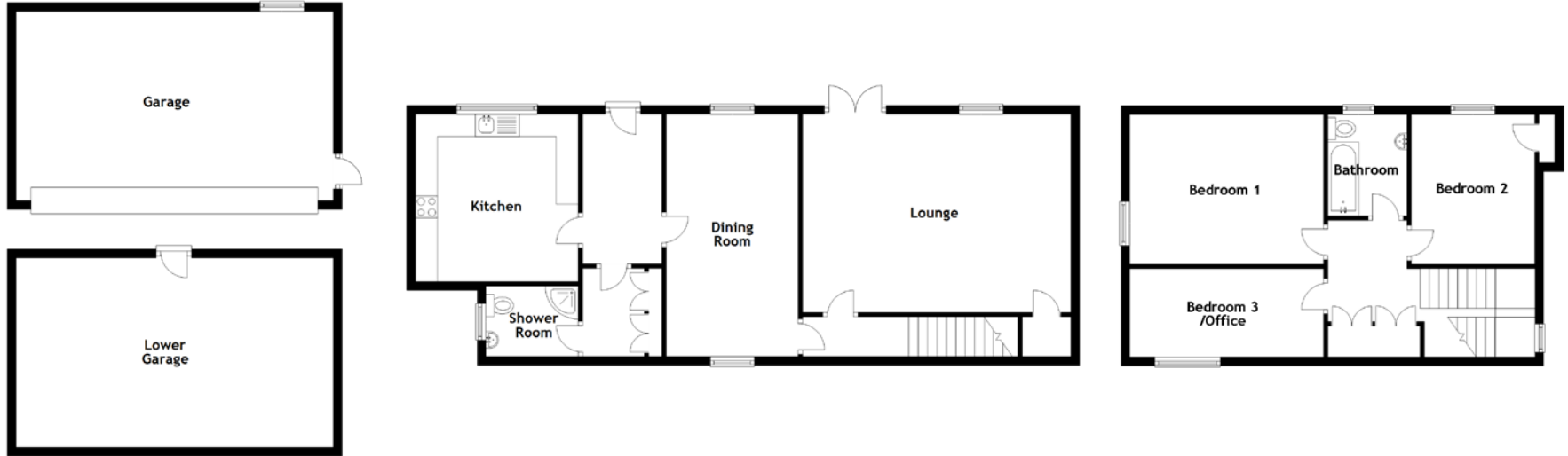


Greenacres, 34 Cupar Road

NEWPORT-ON-TAY, DD6 8DF



Approximate Dimensions (Taken from the widest point)

Lounge	6.10m (20') x 4.50m (14'9")
Dining Room	5.50m (18'1") x 3.00m (9'10")
Kitchen	3.80m (12'6") x 3.70m (12'2")
Shower Room	2.10m (6'11") x 1.60m (5'3")
Bedroom 1	4.40m (14'5") x 3.40m (11'2")
Bedroom 2	3.40m (11'2") x 2.80m (9'2")
Bedroom 3/Office	4.40m (14'5") x 2.00m (6'7")
Bathroom	2.30m (7'7") x 1.80m (5'11")
Garage	7.20m (23'7") x 4.30m (14'1")
Lower Garage	7.20m (23'7") x 4.30m (14'1")

Gross internal floor area (m²): 128m² | EPC Rating: D