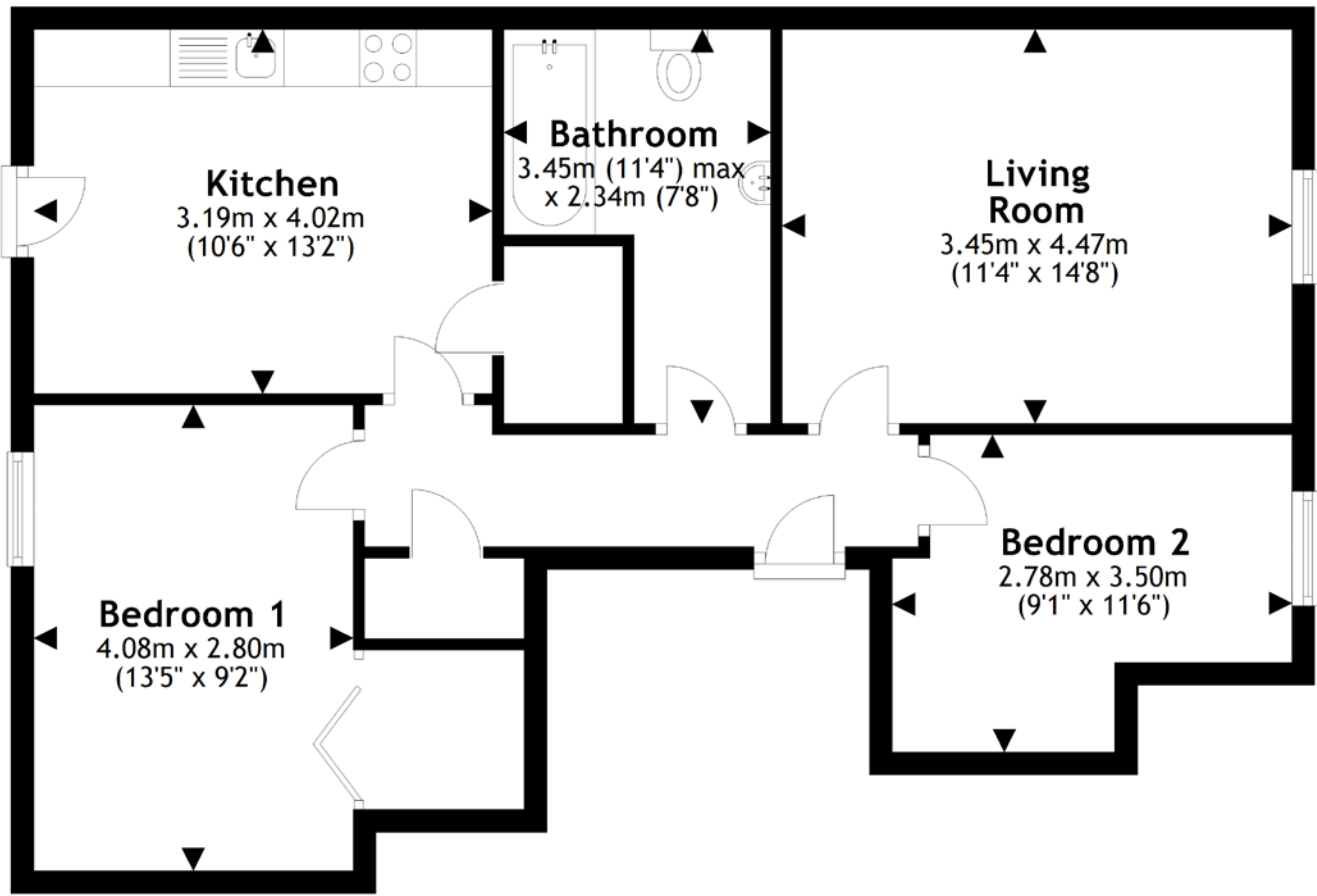


FLOOR PLAN, DIMENSIONS & MAP



Approximate Dimensions (Taken from the widest point)

Living Room 4.47m (14'8") x 3.45m (11'4")
 Kitchen 4.02m (13'2") x 3.19m (10'6")
 Bathroom 3.45m (11'4") x 2.34m (7'8")

Bedroom 1 4.08m (13'5") x 2.80m (9'2")
 Bedroom 2 3.50m (11'6") x 2.78m (9'1")

Gross internal floor area (m²): 69m²
 EPC Rating: D

