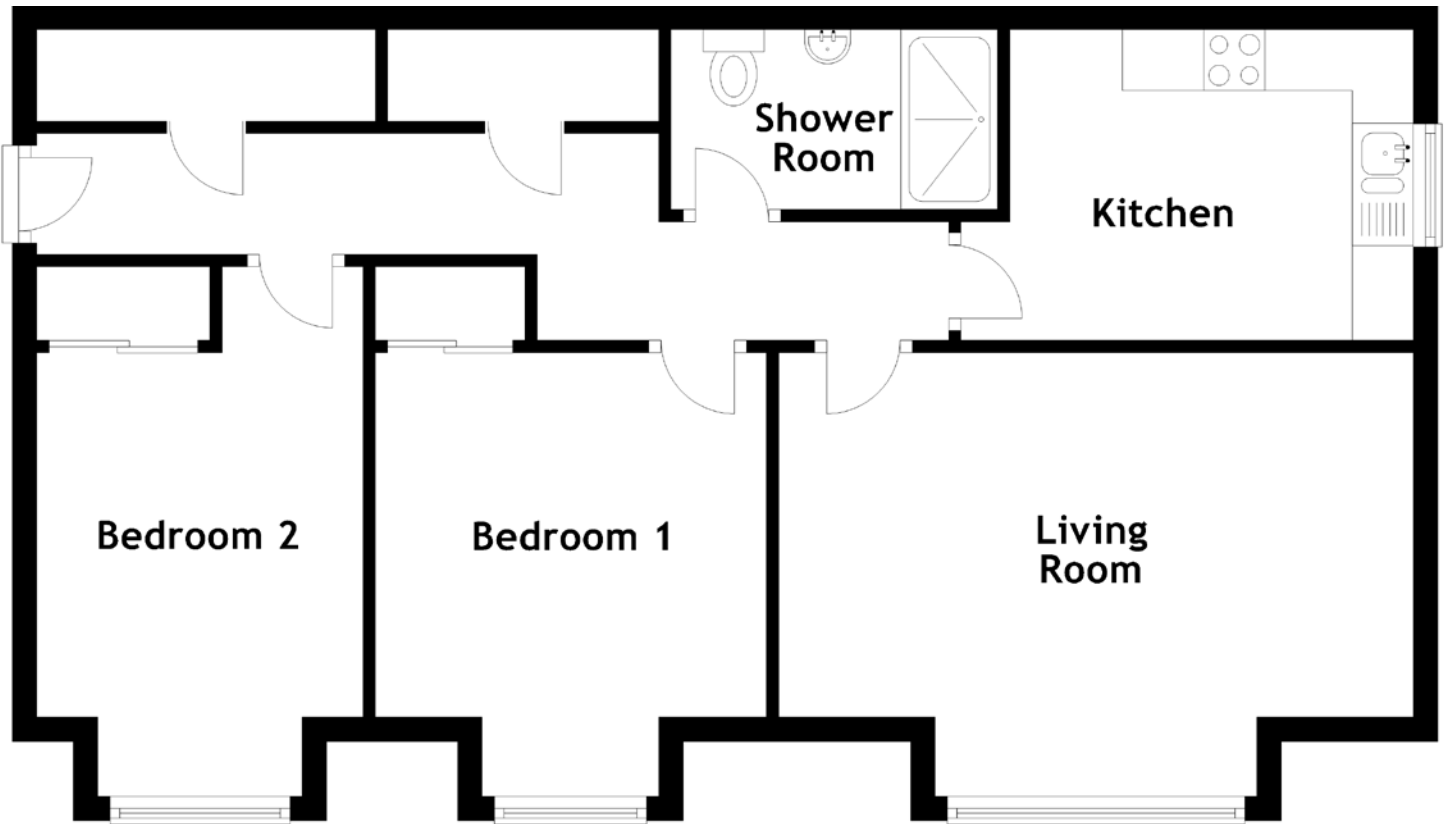


FLOOR PLAN, DIMENSIONS & MAP



Approximate Dimensions (Taken from the widest point)

Living Room 5.20m (17'1") x 3.63m (11'11")
 Kitchen 3.70m (12'2") x 2.54m (8'4")
 Bedroom 1 3.63m (11'11") x 3.20m (10'6")

Bedroom 2 4.33m (14'2") x 2.67m (8'9")
 Shower Room 2.67m (8'9") x 1.47m (4'10")

Gross internal floor area (m²): 63m²
 EPC Rating: C

