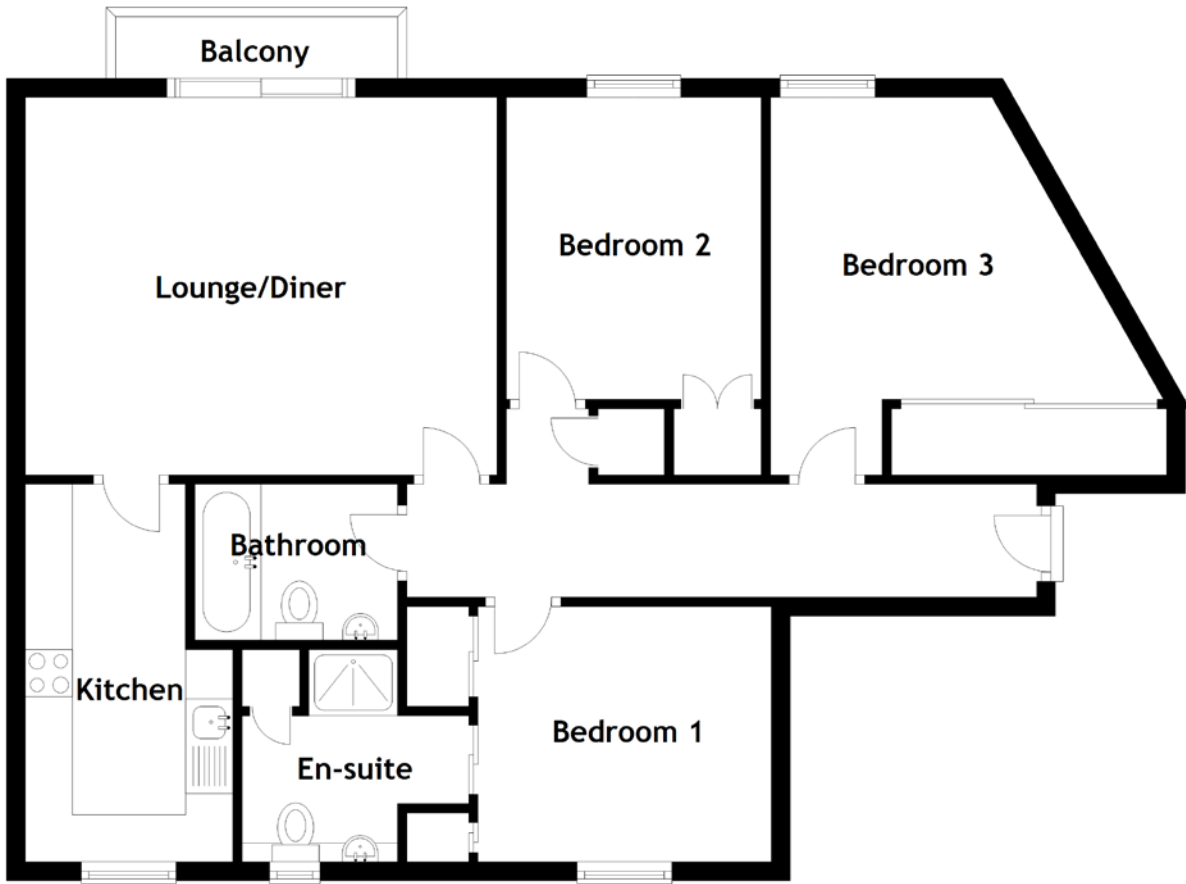


FLOOR PLAN, DIMENSIONS & MAP



Approximate Dimensions
(Taken from the widest point)

Lounge/Diner 5.00m (16'5") x 4.00m (13'1")
 Kitchen 4.00m (13'1") x 2.20m (7'3")
 Bathroom 2.15m (7'1") x 1.65m (5'5")

Bedroom 1 3.10m (10'2") x 2.70m (8'10")
 En-suite 2.40m (7'10") x 2.25m (7'5")
 Bedroom 2 3.20m (10'6") x 2.70m (8'10")
 Bedroom 3 4.20m (13'9") x 4.00m (13'1")

Gross internal floor area (m²): 82m² | EPC Rating: D

