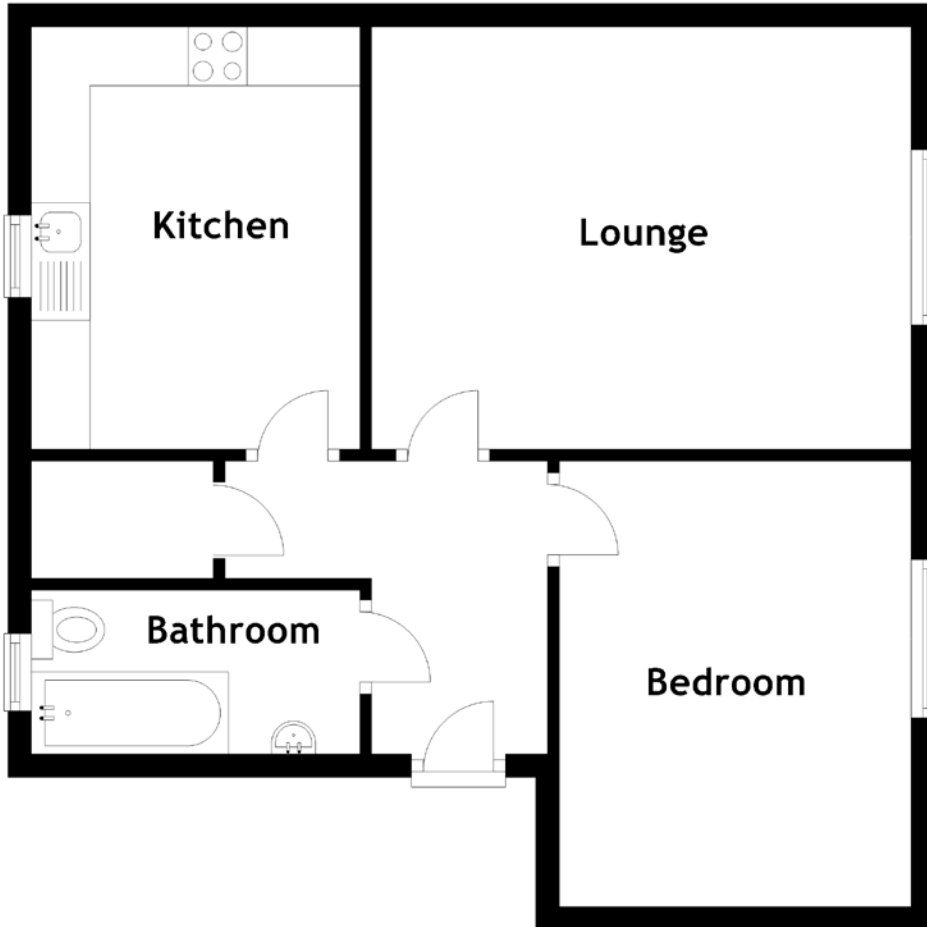


27/1L Arklay Street

DUNDEE, DD3 7LJ



Approximate Dimensions (Taken from the widest point)

Lounge	4.60m (15'1") x 3.60m (11'10")
Kitchen	3.60m (11'10") x 2.80m (9'2")
Bedroom	3.80m (12'6") x 3.00m (9'10")
Bathroom	2.90m (9'6") x 1.40m (4'7")

Gross internal floor area (m²): 53m²

EPC Rating: C