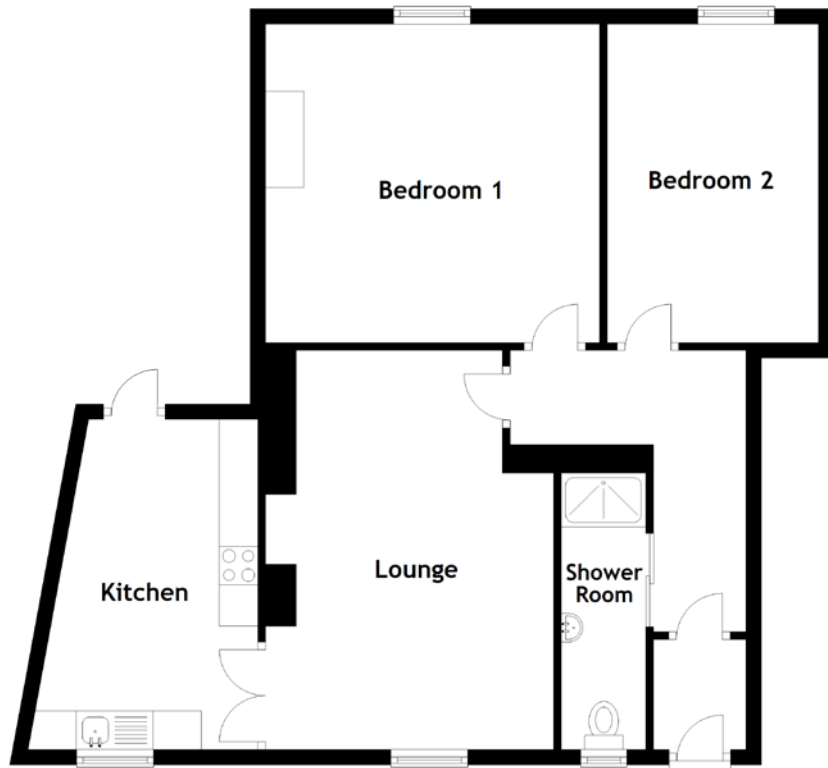


FLOOR PLAN, DIMENSIONS & MAP



Approximate Dimensions (Taken from the widest point)

Lounge 5.20m (17'1") x 3.75m (12'4")
 Kitchen 4.30m (14'1") x 3.00m (9'10")
 Shower Room 3.60m (11'10") x 1.10m (3'7")

Bedroom 1 4.35m (14'3") x 4.15m (13'7")
 Bedroom 2 4.15m (13'7") x 2.75m (9')

Gross internal floor area (m²): 70m²
 EPC Rating: E

