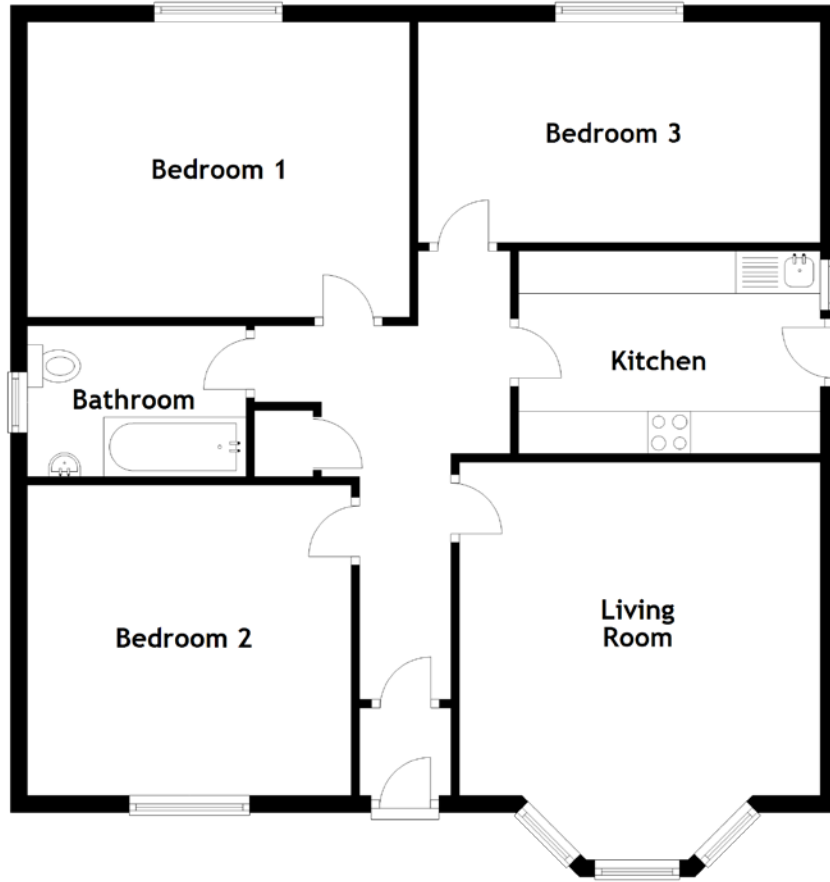


FLOOR PLAN, DIMENSIONS & MAP



Approximate Dimensions (Taken from the widest point)

Living Room 4.69m (15'5") x 4.26m (14')
 Kitchen 3.56m (11'8") x 2.39m (7'10")
 Bathroom 2.58m (8'6") x 1.78m (5'10")
 Bedroom 1 4.51m (14'10") x 3.48m (11'5")

Bedroom 2 3.82m (12'6") x 3.66m (12")
 Bedroom 3 4.75m (15'7") x 2.60m (8'6")

Gross internal floor area (m²): 87m²

EPC Rating: D

