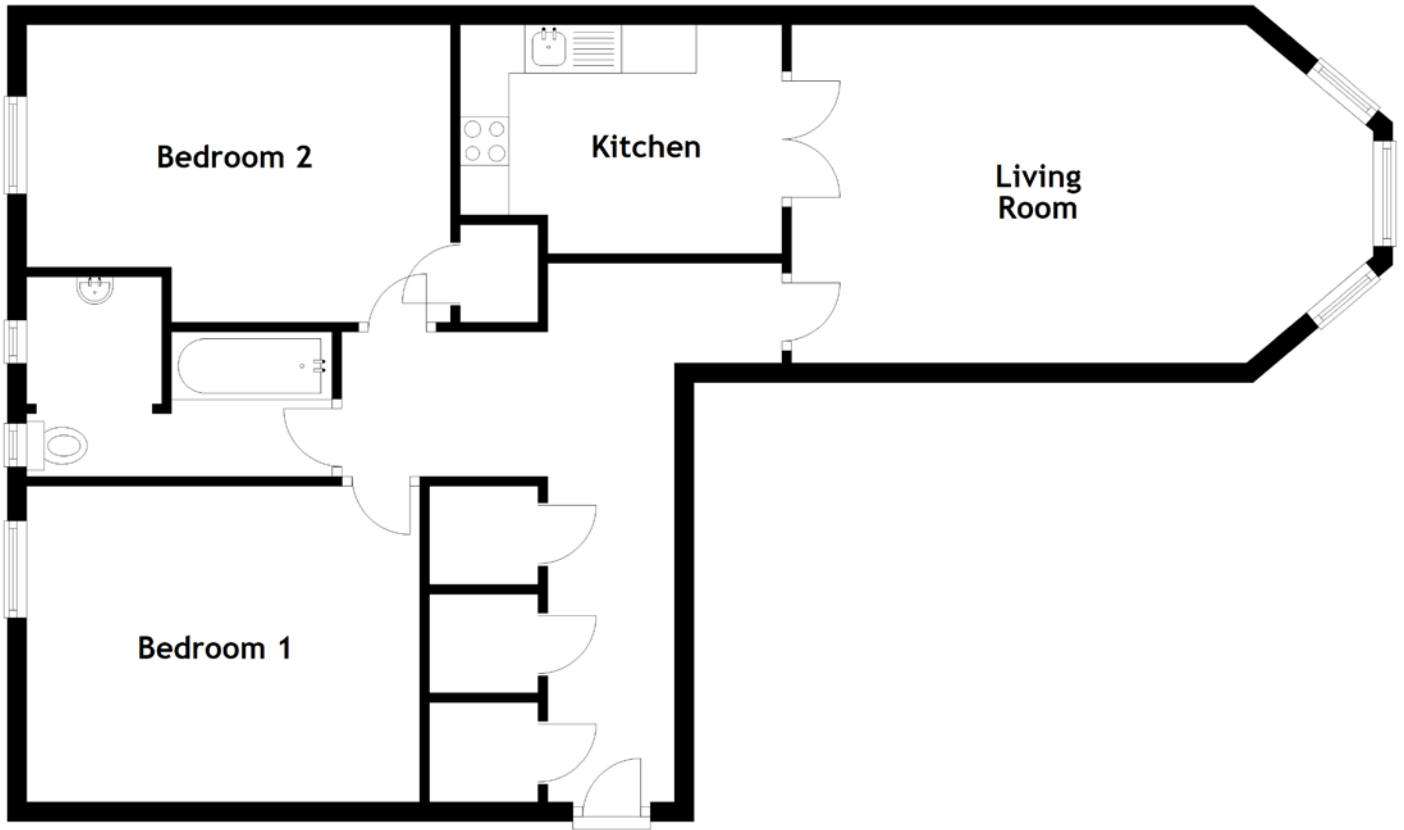


FLOOR PLAN, DIMENSIONS & MAP



Approximate Dimensions (Taken from the widest point)

Living Room 6.01m (19'9") x 3.49m (11'5")
 Kitchen 3.32m (10'11") x 2.36m (7'9")
 Bedroom 1 4.06m (13'4") x 3.26m (10'8")

Bedroom 2 4.38m (14'4") x 3.07m (10'1")
 Bathroom 3.36m (11') x 1.49m (4'11")

Gross internal floor area (m²): 76m²
 EPC Rating: E

