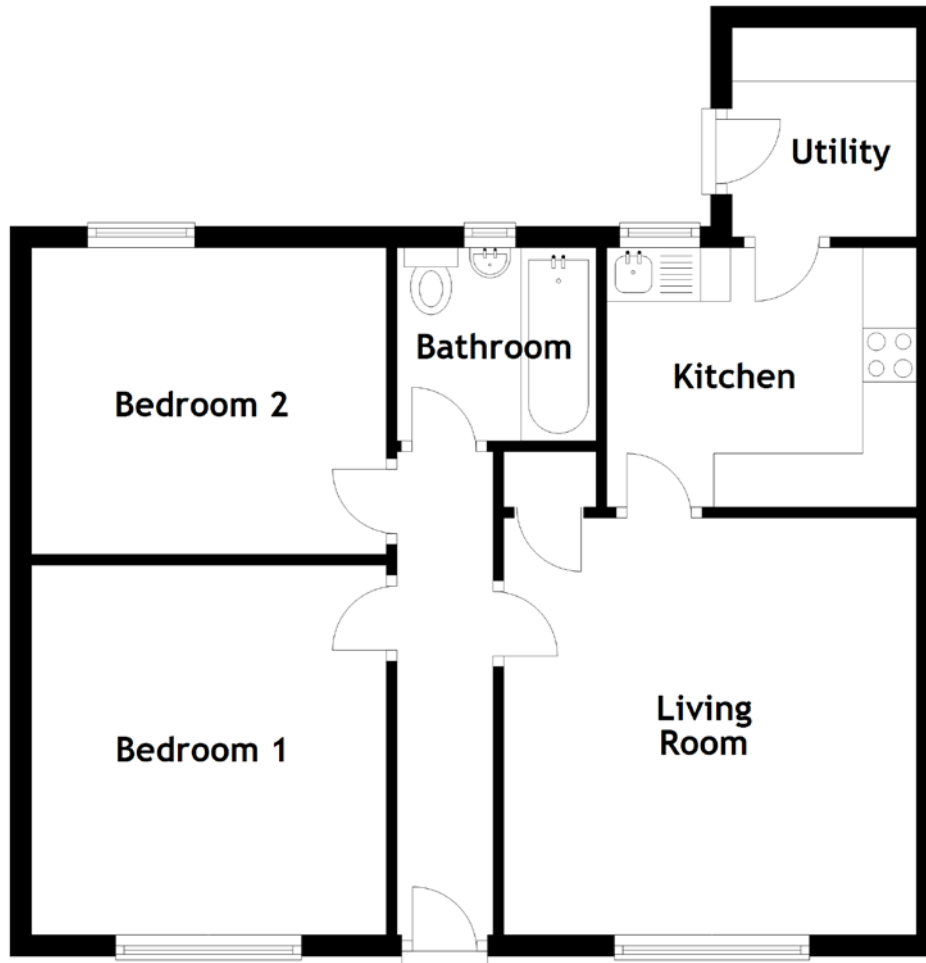


FLOOR PLAN, DIMENSIONS & MAP



Approximate Dimensions
(Taken from the widest point)

Living Room 3.89m (12'9") x 3.85m (12'8")
 Kitchen 2.89m (9'6") x 2.42m (7'11")
 Utility 1.95m (6'5") x 1.72m (5'8")

Bathroom 1.86m (6'1") x 1.80m (5'11")
 Bedroom 1 3.45m (11'4") x 3.31m (10'10")
 Bedroom 2 3.31m (10'10") x 2.86m (9'5")

Gross internal floor area (m²): 59m²
 EPC Rating: D

