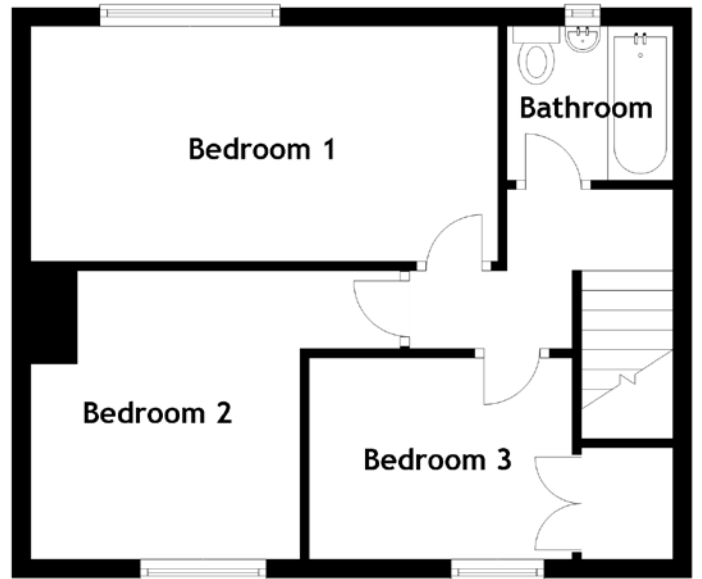
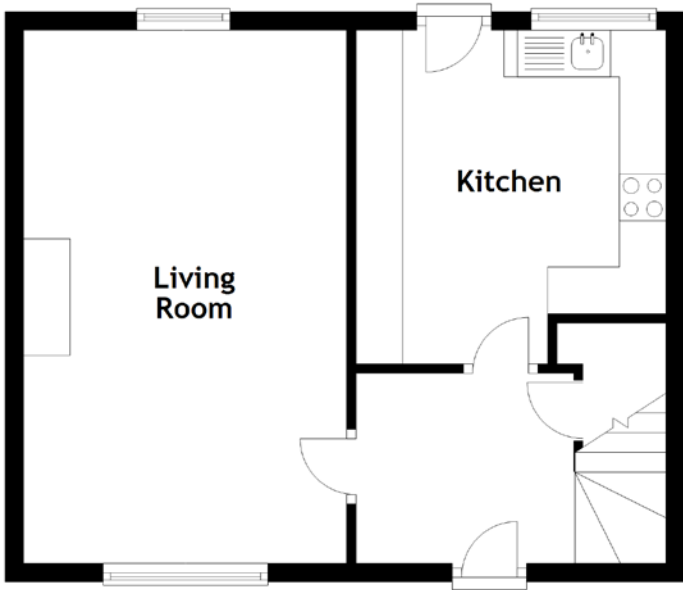


# FLOOR PLAN, DIMENSIONS & MAP



Approximate Dimensions  
(Taken from the widest point)

Living Room 5.72m (18'9") x 3.47m (11'5")  
 Kitchen 3.58m (11'9") x 3.33m (10'11")  
 Bathroom 1.78m (5'10") x 1.65m (5'5")

Bedroom 1 5.00m (16'5") x 2.52m (8'3")  
 Bedroom 2 3.97m (13') x 3.10m (10'2")  
 Bedroom 3 2.82m (9'3") x 2.16m (7'1")

Gross internal floor area (m<sup>2</sup>): 79m<sup>2</sup>  
 EPC Rating: C

