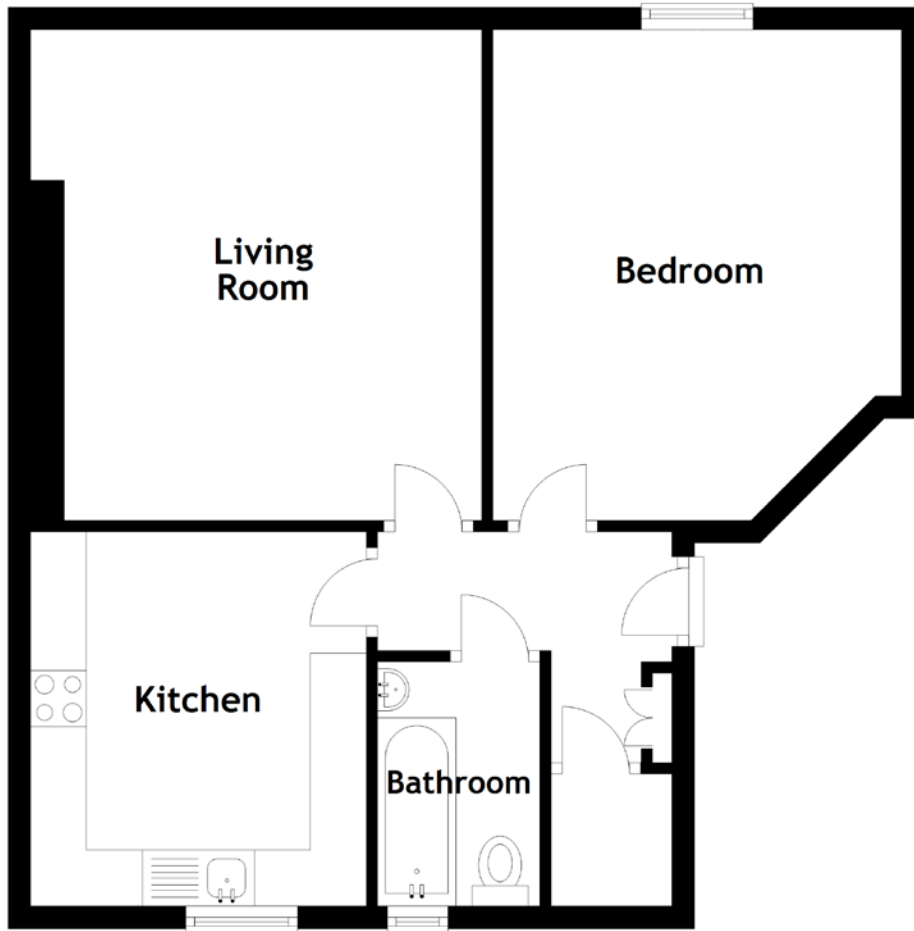


FLOOR PLAN, DIMENSIONS & MAP



Approximate Dimensions
(Taken from the widest point)

Living Room
Kitchen

4.38m (14'4") x 4.03m (13'3")
3.34m (10'11") x 3.00m (9'10")

Bedroom
Bathroom

4.38m (14'4") x 3.65m (12')
2.18m (7'2") x 1.45m (4'9")

Gross internal floor area (m²): 56m²
EPC Rating: C

