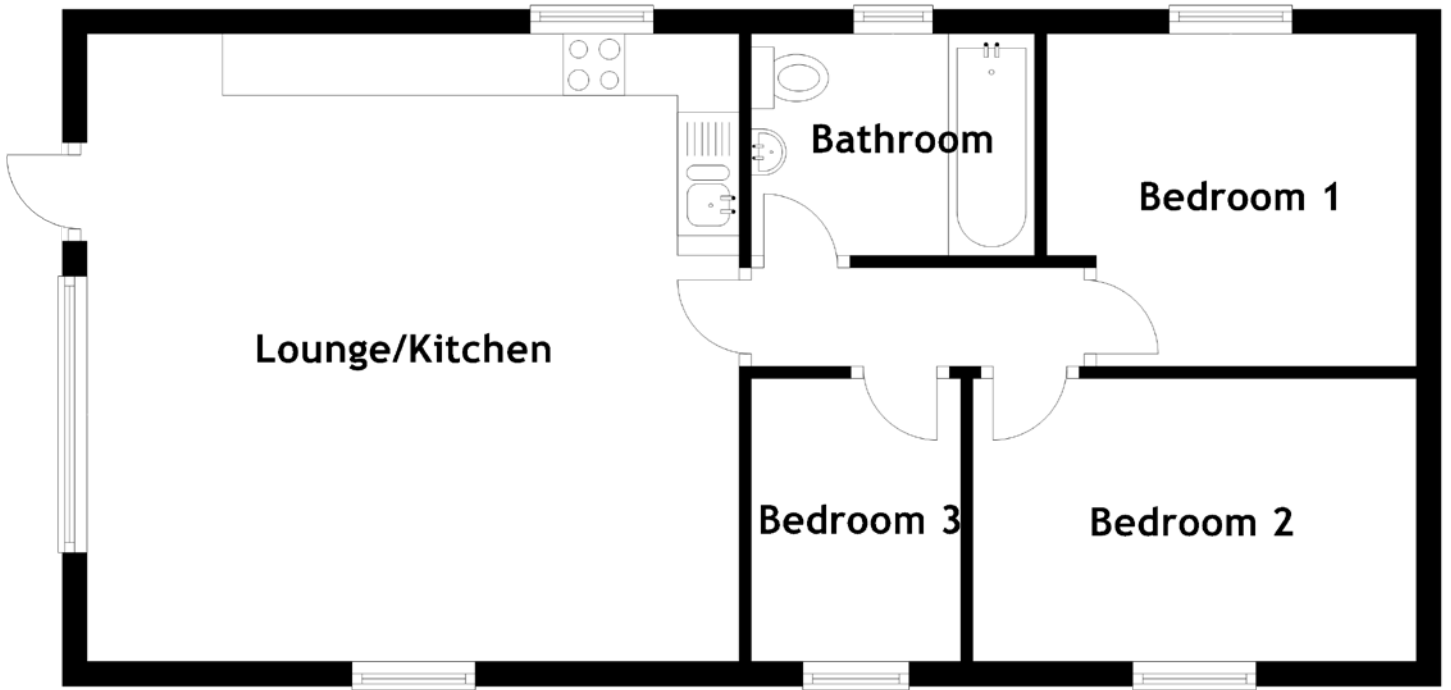


FLOOR PLAN, DIMENSIONS & MAP



Approximate Dimensions (Taken from the widest point)

Lounge/Kitchen 5.30m (17'5") x 5.10m (16'9")
Bathroom 2.20m (7'3") x 1.70m (5'7")
Bedroom 1 3.00m (9'10") x 2.70m (8'10")

Bedroom 2 3.60m (11'10") x 2.30m (7'7")
Bedroom 3 2.30m (7'7") x 1.70m (5'7")

Gross internal floor area (m²): 55m²
EPC Rating: D

