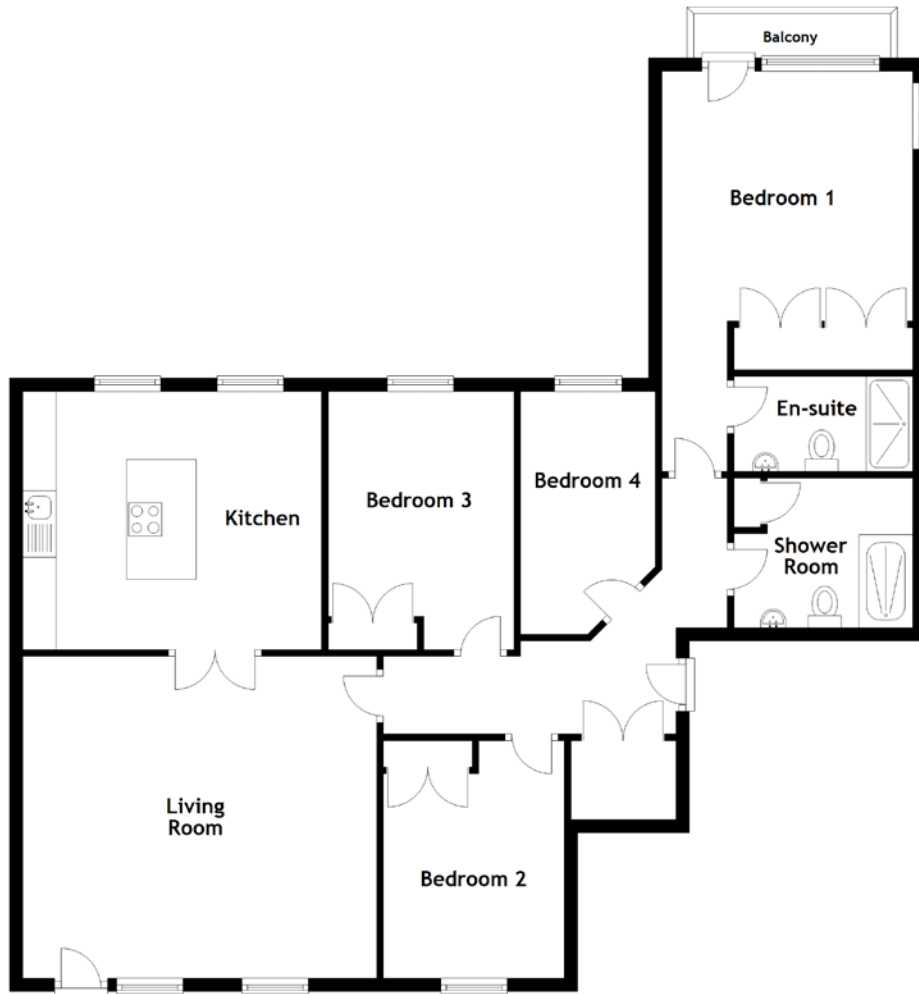


FLOOR PLAN, DIMENSIONS & MAP



Approximate Dimensions
(Taken from the widest point)

Living Room 5.33m (17'6") x 4.85m (15'11")
 Kitchen 4.50m (14'9") x 3.89m (12'9")
 Bedroom 1 6.03m (19'9") x 3.78m (12'5")
 En-suite 2.69m (8'10") x 1.43m (4'8")

Bedroom 2 3.58m (11'9") x 2.73m (8'11")
 Bedroom 3 3.89m (12'9") x 2.80m (9'2")
 Bedroom 4 3.15m (10'4") x 2.03m (6'8")
 Shower Room 2.69m (8'10") x 2.27m (7'5")

Gross internal floor area (m²): 112m²
 EPC Rating: B

