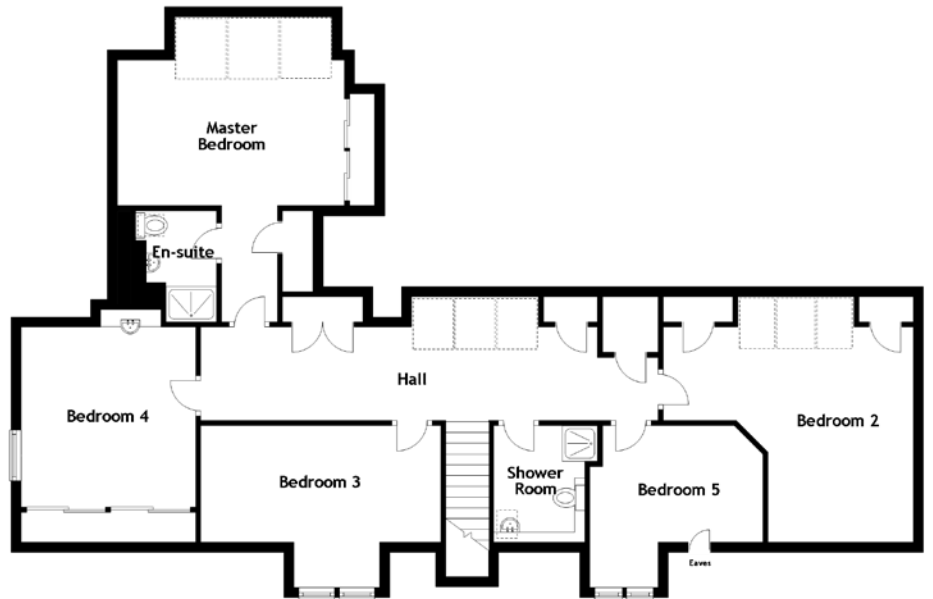
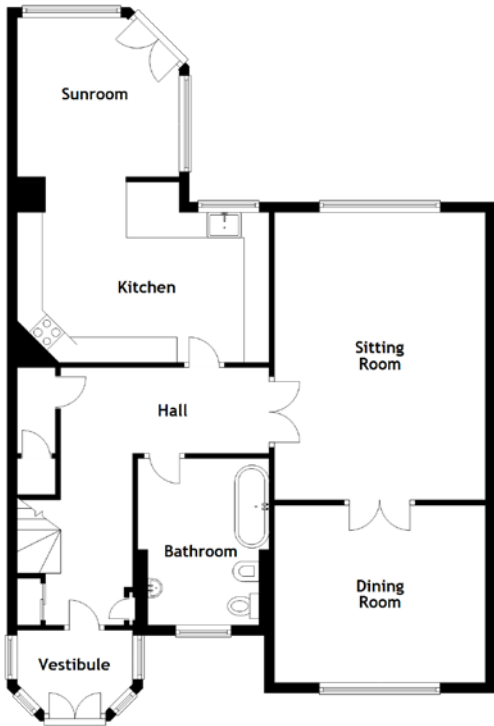


FLOOR PLAN, DIMENSIONS & MAP



Approximate Dimensions (Taken from the widest point)

Vestibule	2.28m (7'6") x 1.60m (5'3")
Sitting Room	5.69m (18'8") x 4.17m (13'8")
Dining Room	4.17m (13'8") x 3.56m (11'8")
Kitchen	4.98m (16'4") x 2.97m (9'9")
Sunroom	3.20m (10'6") x 3.15m (10'4")
Bathroom	3.30m (10'10") x 2.60m (8'6")
Shower Room	2.30m (7'7") x 1.80m (5'11")

Master Bedroom	4.34m (14'3") x 3.73m (12'3")
En-suite	2.20m (7'3") x 1.60m (5'3")
Bedroom 2	4.95m (16'3") x 4.85m (15'11")
Bedroom 3	4.75m (15'7") x 3.20m (10'6")
Bedroom 4	3.56m (11'8") x 3.45m (11'4")
Bedroom 5	3.43m (11'3") x 3.20m (10'6")

Gross internal floor area (m²): 191m²
EPC Rating: D

