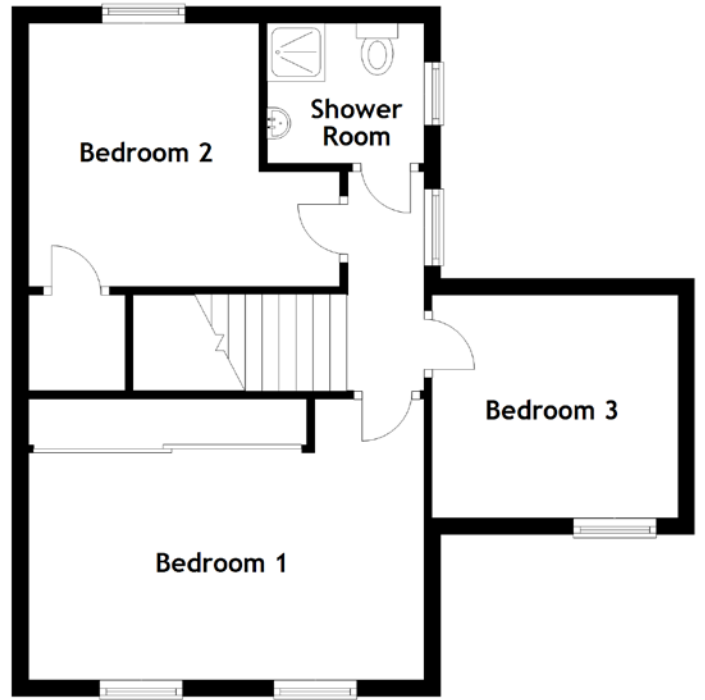
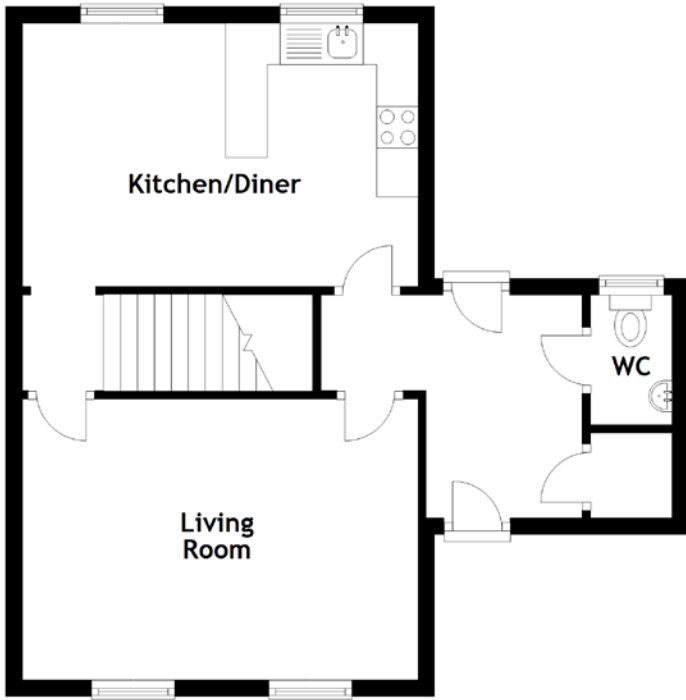


FLOOR PLAN, DIMENSIONS & MAP



Approximate Dimensions
(Taken from the widest point)

Living Room 4.77m (15'8") x 3.38m (11'1")
 Kitchen/Diner 4.77m (15'8") x 3.17m (10'5")
 WC 1.57m (5'2") x 0.98m (3'3")

Shower Room 1.89m (6'3") x 1.69m (5'6")
 Bedroom 1 4.79m (15'9") x 3.44m (11'3")
 Bedroom 2 3.75m (12'4") x 3.17m (10'5")
 Bedroom 3 2.99m (9'10") x 2.73m (8'11")

Gross internal floor area (m²): 91m² | EPC Rating: D

