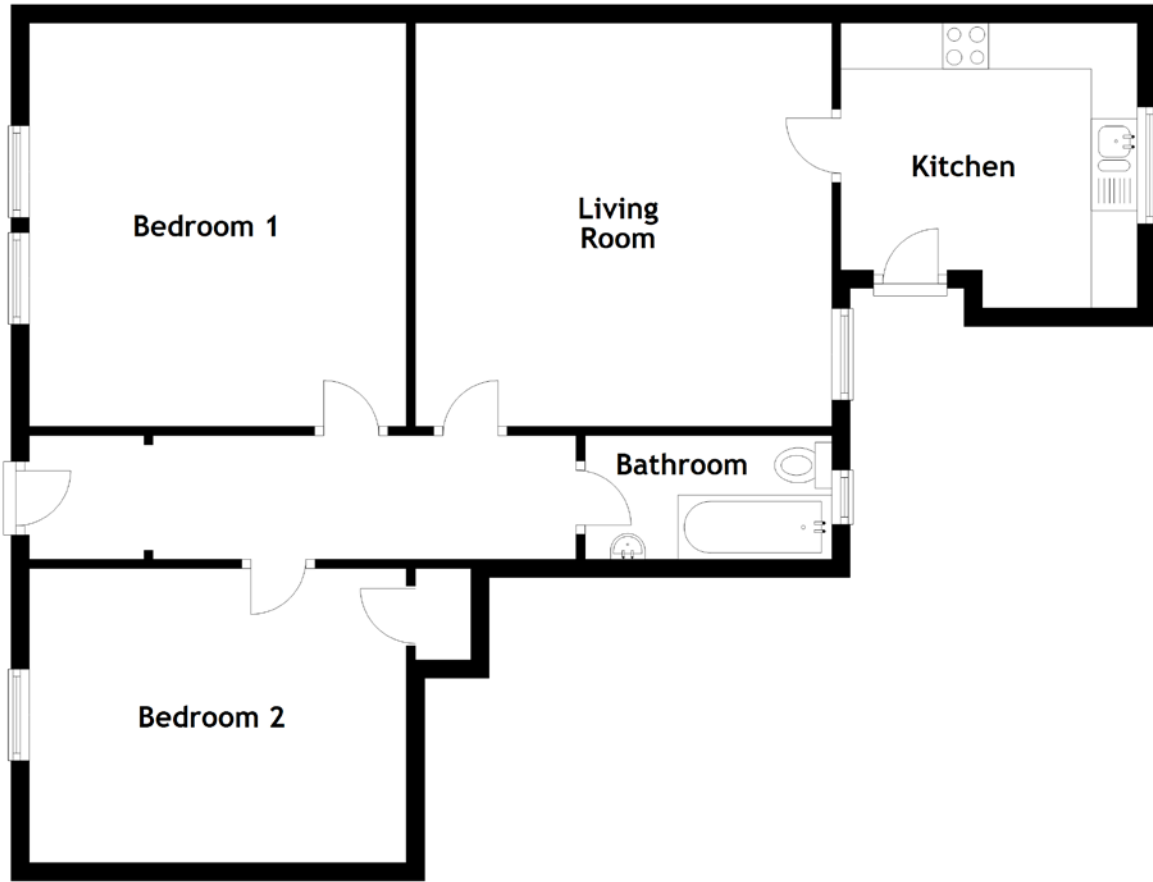


# FLOOR PLAN, DIMENSIONS & MAP



Approximate Dimensions (Taken from the widest point)

Living Room      4.53m (14'10") x 4.40m (14'5")  
 Kitchen          3.23m (10'7") x 3.11m (10'2")  
 Bathroom        2.69m (8'10") x 1.35m (4'5")

Bedroom 1        4.40m (14'5") x 4.12m (13'6")  
 Bedroom 2        4.11m (13'6") x 3.21m (10'6")

Gross internal floor area (m<sup>2</sup>): 72m<sup>2</sup>  
 EPC Rating: C

