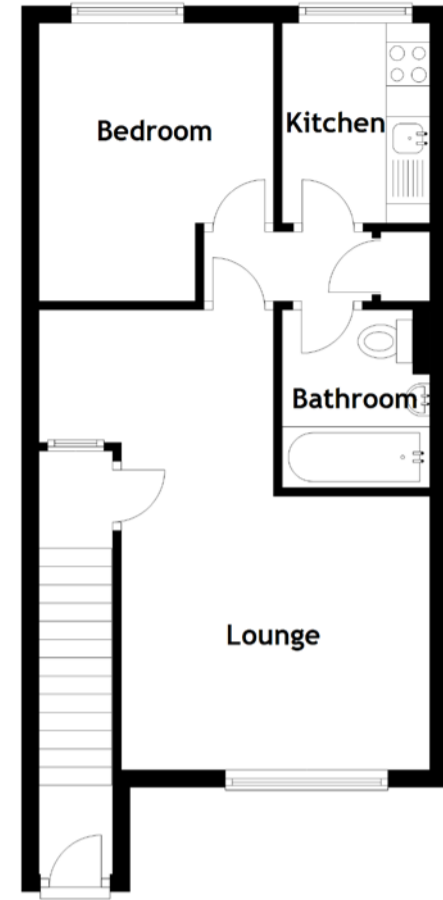


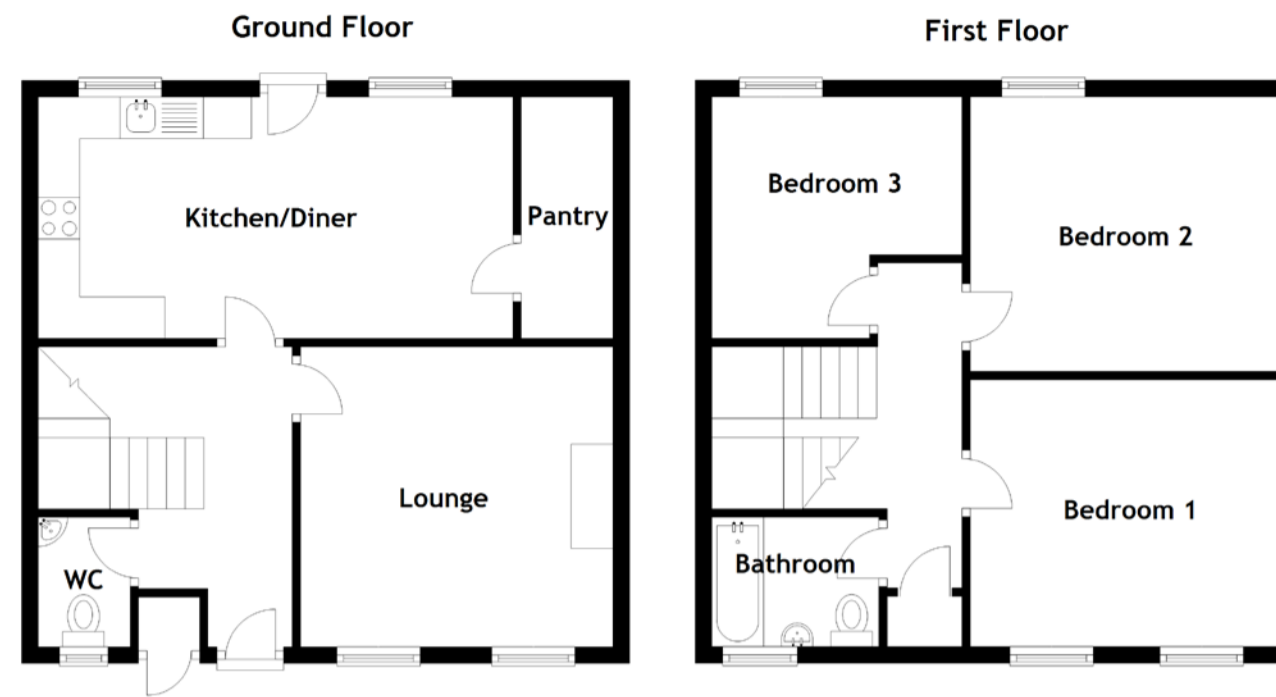
### 39 Elgin Drive, Stirling, FK7 7TZ



Approximate Dimensions (Taken from the widest point)

Lounge	5.30m (17'5") x 3.55m (11'8")
Kitchen	2.30m (7'7") x 1.75m (5'9")
Bedroom	3.20m (10'6") x 2.70m (8'10")
Bathroom	2.05m (6'9") x 1.70m (5'7")

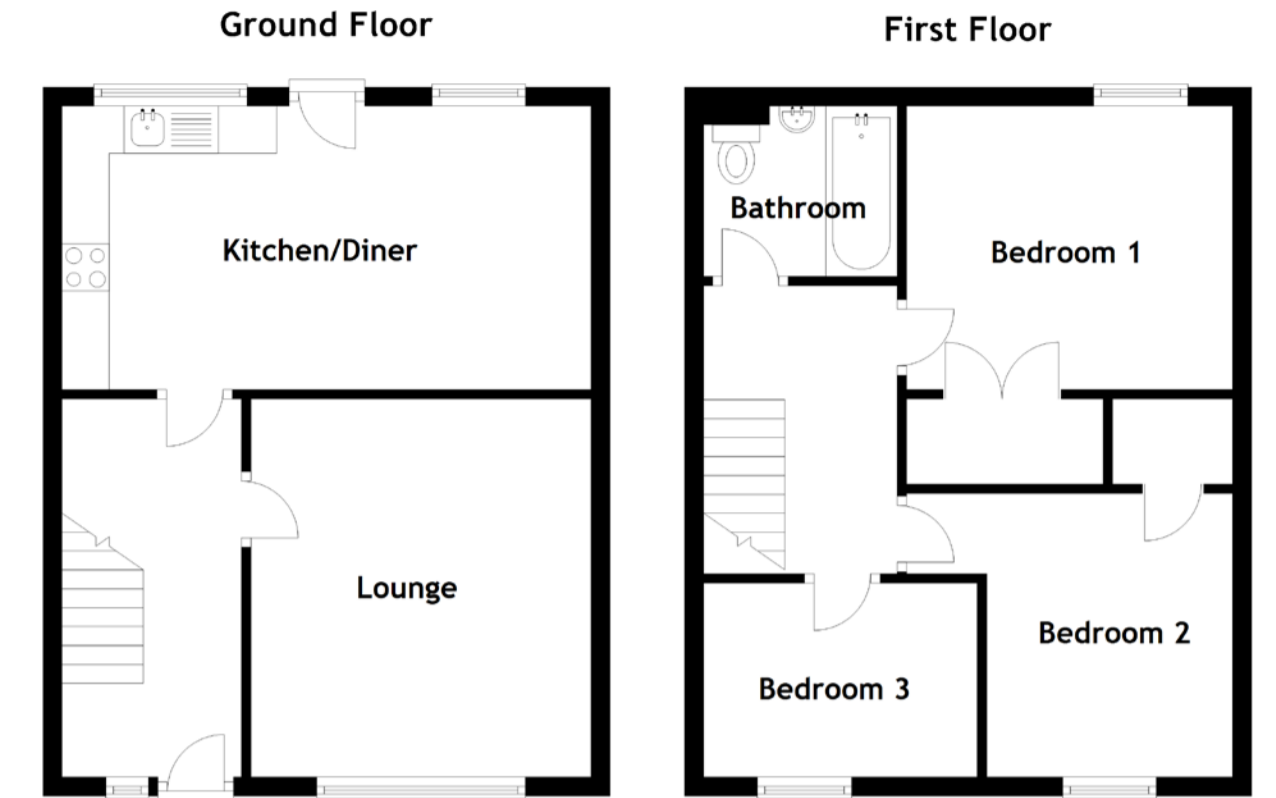
### 5 Morgan Court, Stirling, FK7 0QX



Approximate Dimensions (Taken from the widest point)

Lounge	3.75m (12'4") x 3.60m (11'10")
Kitchen/Diner	5.70m (18'8") x 2.90m (9'6")
Pantry	2.90m (9'6") x 1.10m (3'7")
WC	1.55m (5'1") x 1.10m (3'8")
Bedroom 1	3.80m (12'5") x 3.30m (10'10")
Bedroom 2	3.80m (12'5") x 3.30m (10'10")
Bedroom 3	3.00m (9'10") x 2.90m (9'6")
Bathroom	2.00m (6'7") x 1.70m (5'7")

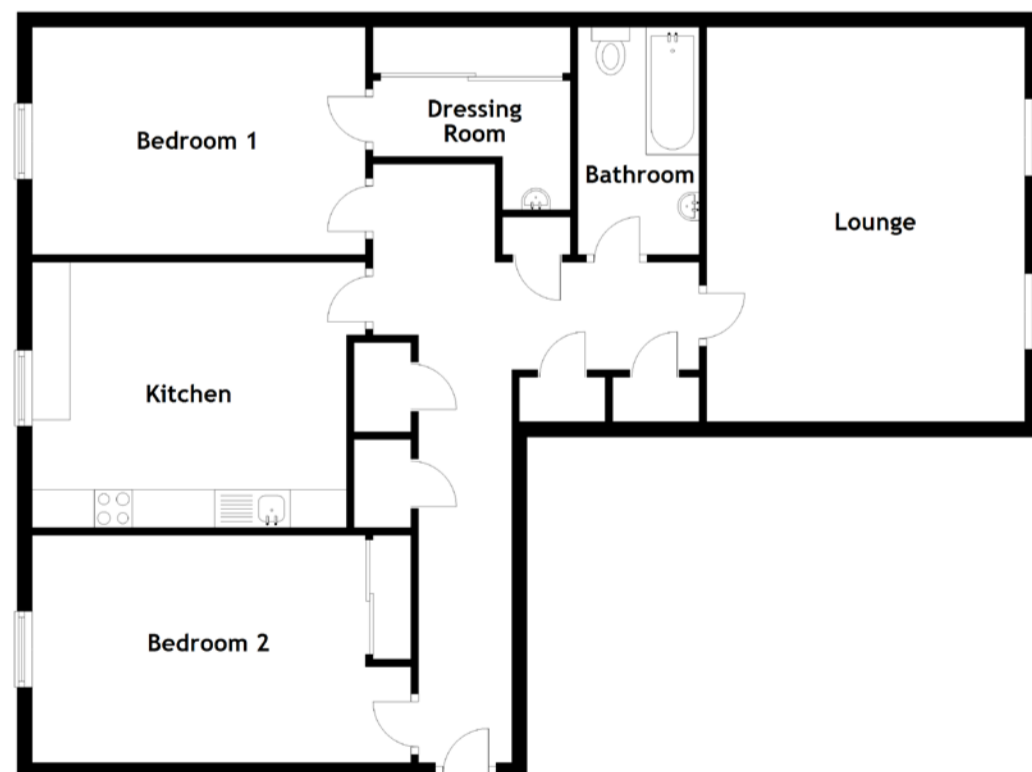
### 27 Annfield Drive, Stirling, FK7 7RE



Approximate Dimensions (Taken from the widest point)

Lounge	4.00m (13'1") x 3.60m (11'10")
Kitchen/Diner	5.60m (18'4") x 3.00m (9'10")
Bedroom 1	3.45m (11'4") x 3.00m (9'10")
Bedroom 2	3.45m (11'4") x 3.00m (9'10")
Bedroom 3	2.90m (9'6") x 2.05m (6'9")
Bathroom	2.00m (6'7") x 1.80m (5'11")

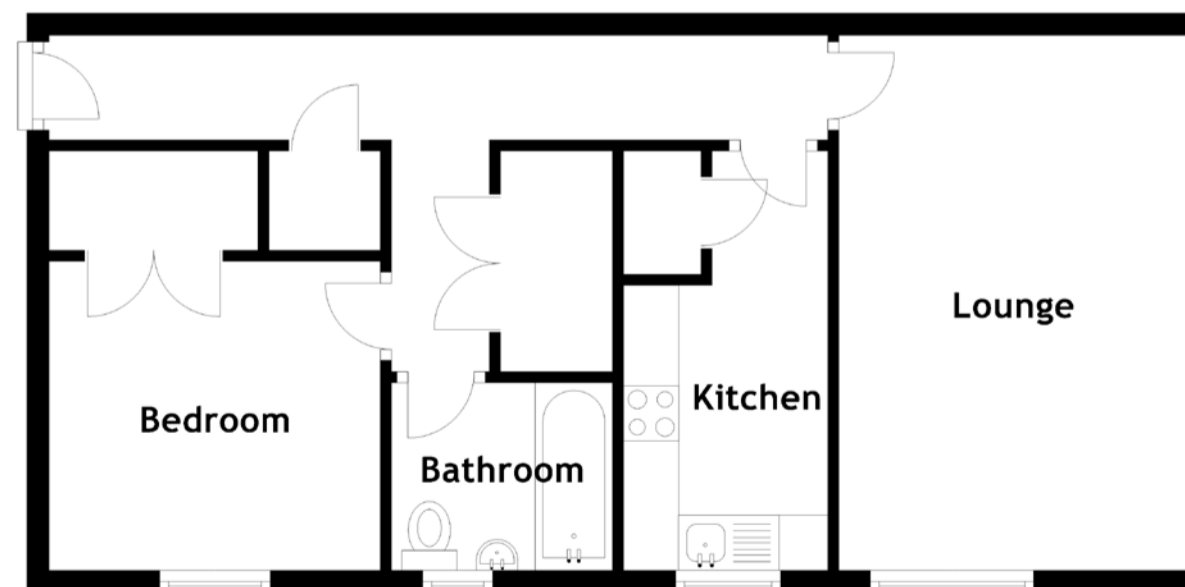
### 24 Pleasance Court, Dundee, DD1 5BB



Approximate Dimensions (Taken from the widest point)

Lounge	5.20m (17'1") x 4.20m (13'9")
Kitchen	4.40m (14'5") x 3.50m (11'6")
Bedroom 1	4.40m (14'5") x 3.00m (9'10")
Dressing Room	2.60m (8'7") x 1.70m (5'7")
Bedroom 2	5.00m (16'5") x 3.00m (9'10")
Bathroom	3.00m (9'10") x 1.60m (5'3")

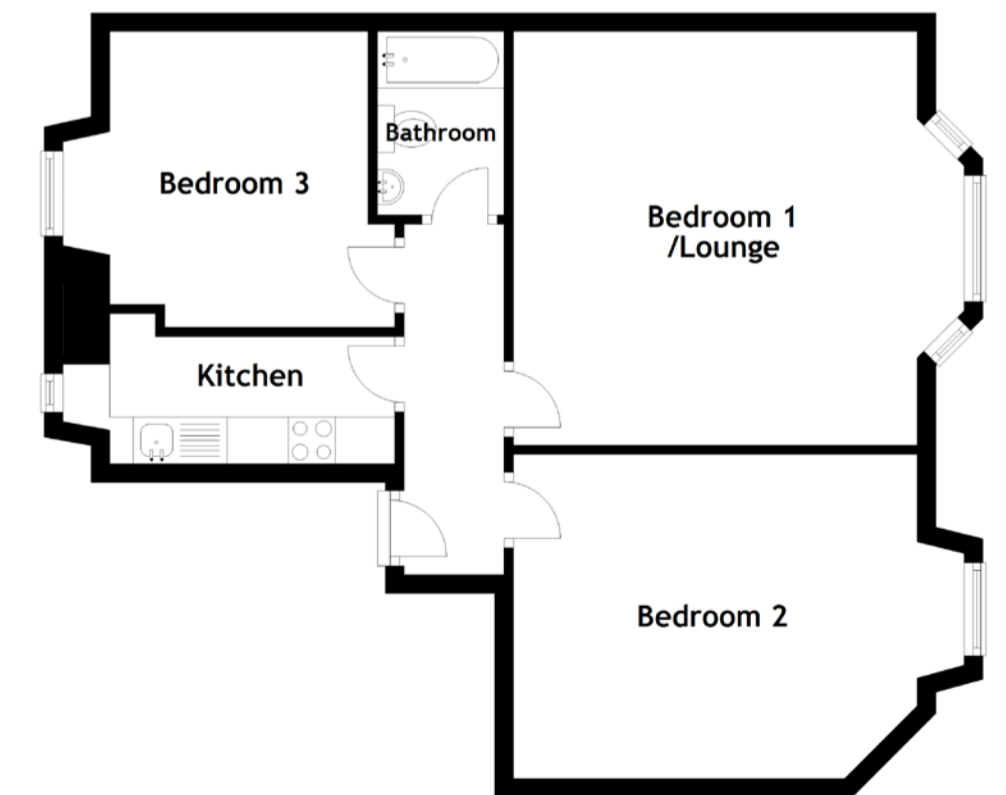
### 24 Riverside View, Alloa, FK10 1BU



Approximate Dimensions (Taken from the widest point)

Lounge	4.85m (15'11") x 3.20m (10'6")
Kitchen	3.80m (12'6") x 1.85m (6'1")
Bedroom	3.00m (9'10") x 2.80m (9'2")
Bathroom	2.00m (6'7") x 1.70m (5'7")

### 22 Firs Street, Falkirk, FK2 7AY



Approximate Dimensions (Taken from the widest point)

Kitchen	3.70m (12'2") x 1.06m (3'6")
Bedroom 1/Lounge	4.80m (15'9") x 4.40m (14'5")
Bedroom 2	4.30m (14'1") x 3.45m (11'4")
Bedroom 3	3.25m (10'8") x 3.15m (10'4")
Bathroom	1.95m (6'5") x 1.35m (4'5")