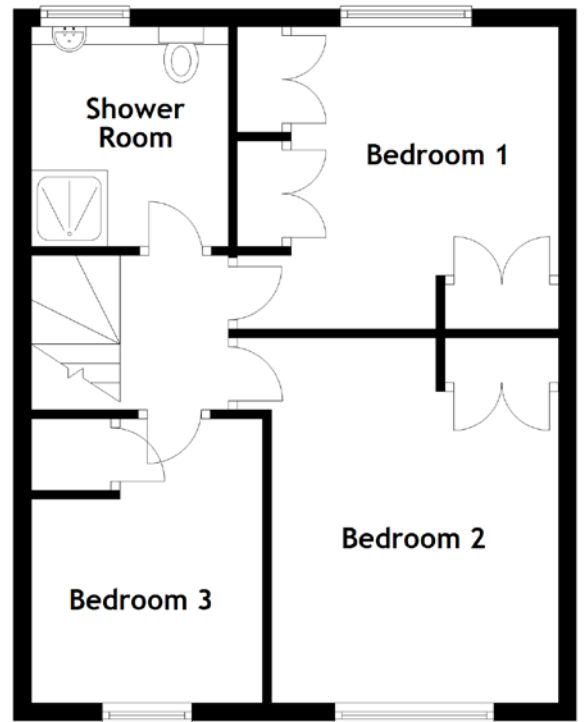
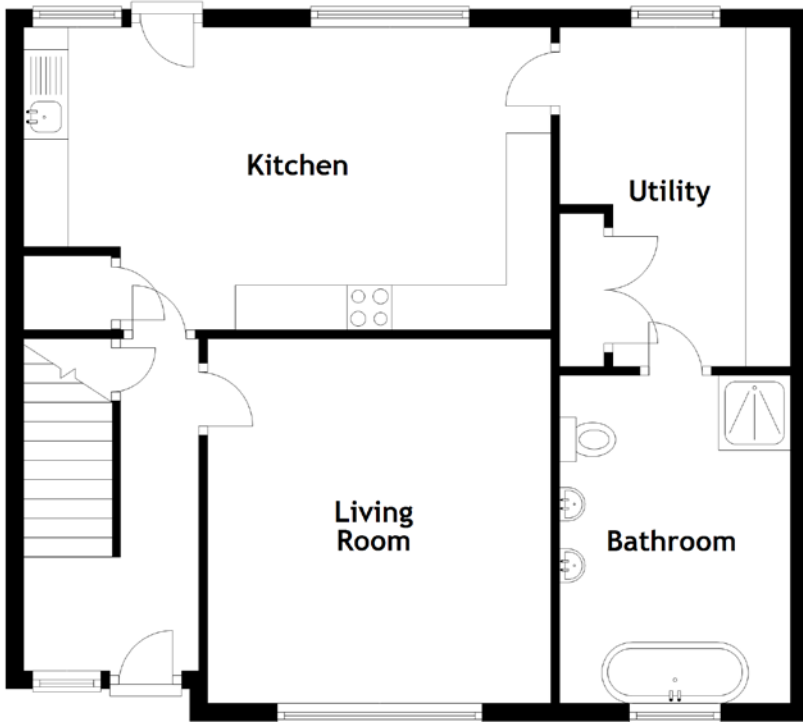


FLOOR PLAN, DIMENSIONS & MAP



[CLICK HERE FOR VIRTUAL TOUR](#)

Approximate Dimensions
(Taken from the widest point)

| | |
|-------------|-------------------------------|
| Living Room | 4.08m (13'5") x 3.84m (12'7") |
| Kitchen | 5.51m (18'1") x 3.39m (11'1") |
| Utility | 3.80m (12'6") x 2.58m (8'6") |
| Bathroom | 3.65m (12') x 2.58m (8'6") |

| | |
|-------------|-------------------------------|
| Bedroom 1 | 3.59m (11'9") x 3.38m (11'1") |
| Bedroom 2 | 4.09m (13'5") x 3.59m (11'9") |
| Bedroom 3 | 3.18m (10'5") x 2.59m (8'6") |
| Shower Room | 2.46m (8'1") x 2.20m (7'3") |

Gross internal floor area (m²): 108m²
EPC Rating: C

