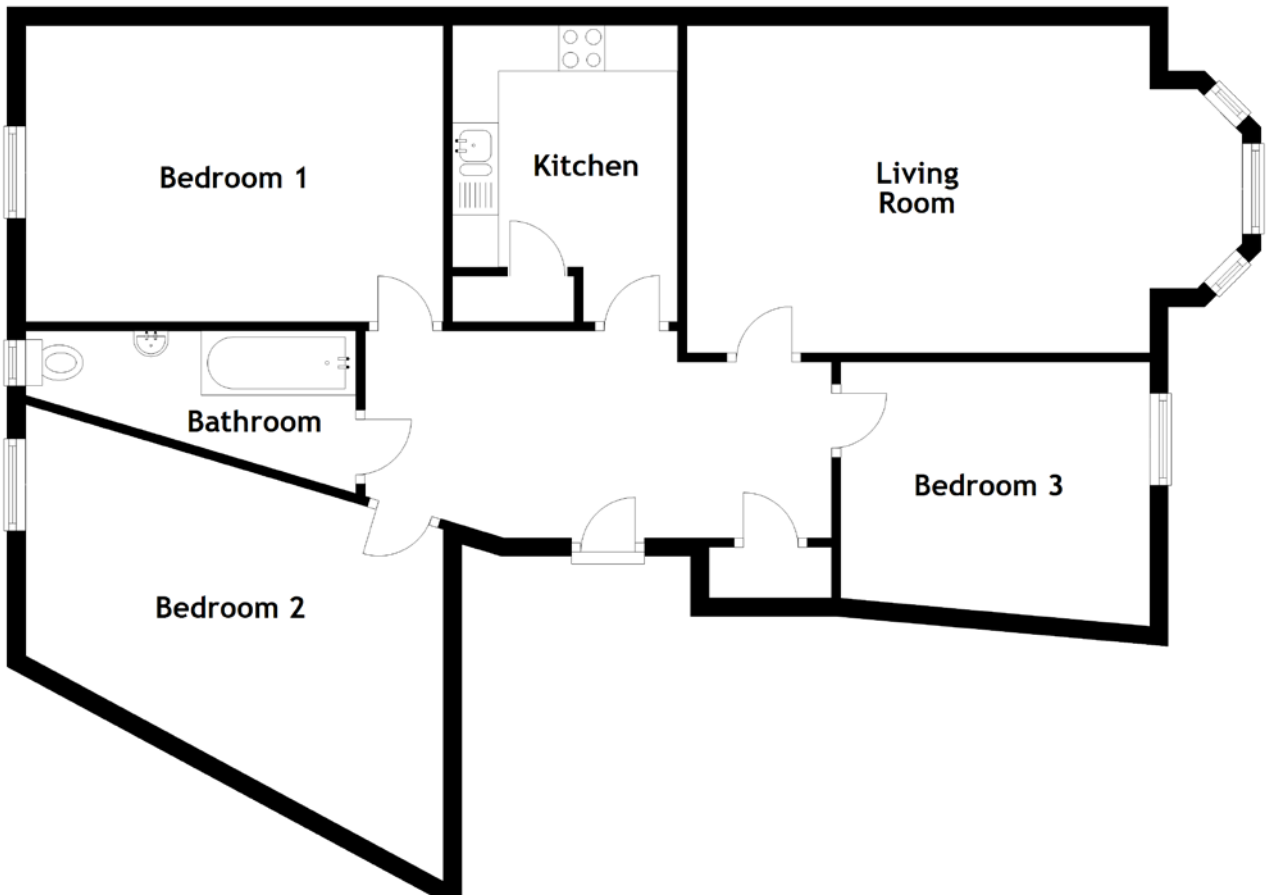


# FLOOR PLAN, DIMENSIONS & MAP



Approximate Dimensions  
(Taken from the widest point)

Living Room 6.04m (19'10") x 3.56m (11'8")  
 Kitchen 3.22m (10'7") x 2.65m (8'8")  
 Bedroom 1 4.34m (14'3") x 3.22m (10'7")

Bedroom 2 4.54m (14'11") x 2.73m (8'11")  
 Bedroom 3 3.36m (11') x 2.88m (9'5")  
 Bathroom 3.59m (11'9") x 1.79m (5'11")

Gross internal floor area (m<sup>2</sup>): 88m<sup>2</sup>  
 EPC Rating: E

