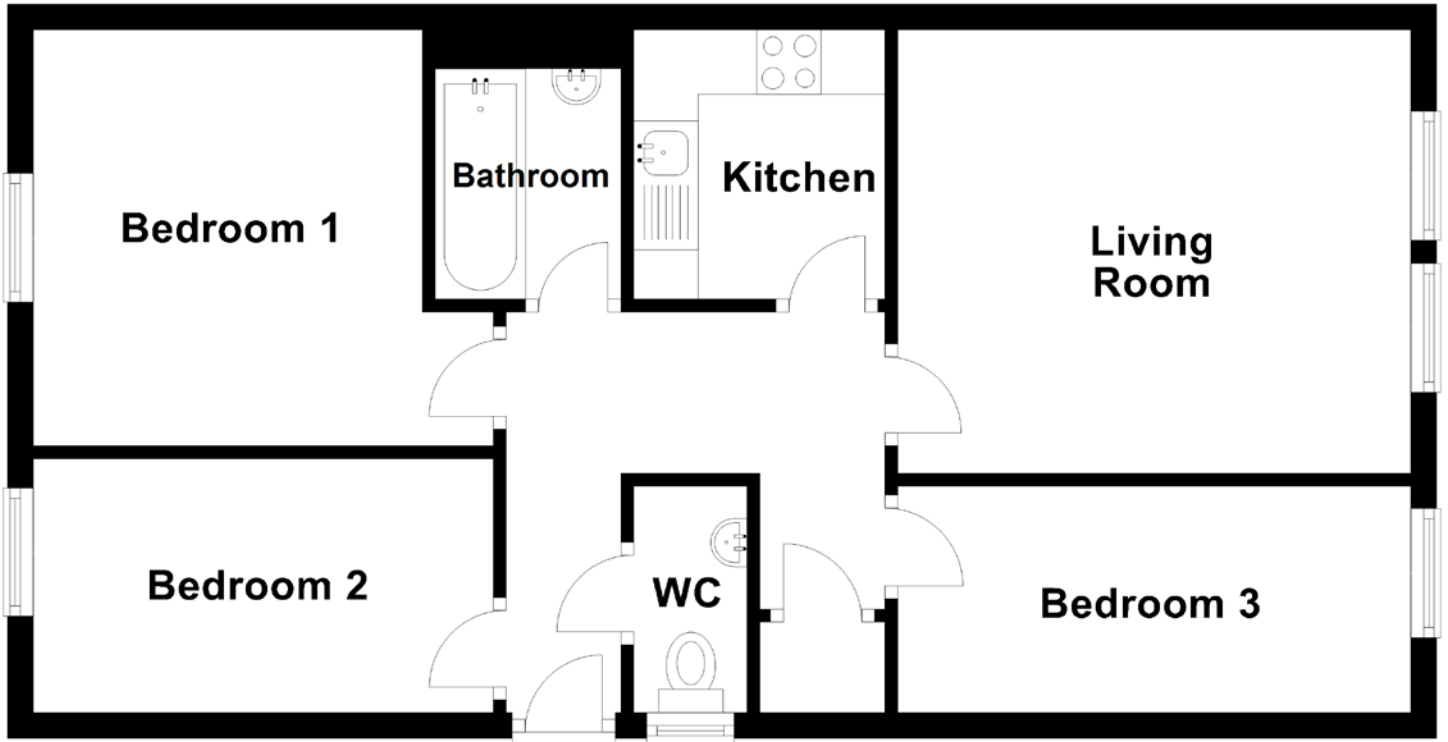


FLOOR PLAN, DIMENSIONS & MAP



Approximate Dimensions (Taken from the widest point)

Living Room 3.98m (13'1") x 3.44m (11'3")
 Kitchen 2.09m (6'10") x 1.95m (6'5")
 Bathroom 1.73m (5'8") x 1.44m (4'9")
 WC 1.76m (5'9") x 0.88m (2'11")

Bedroom 1 3.57m (11'9") x 3.23m (10'7")
 Bedroom 2 3.57m (11'9") x 1.89m (6'2")
 Bedroom 3 3.83m (12'7") x 1.76m (5'9")

Gross internal floor area (m²): 60m²
 EPC Rating: C

