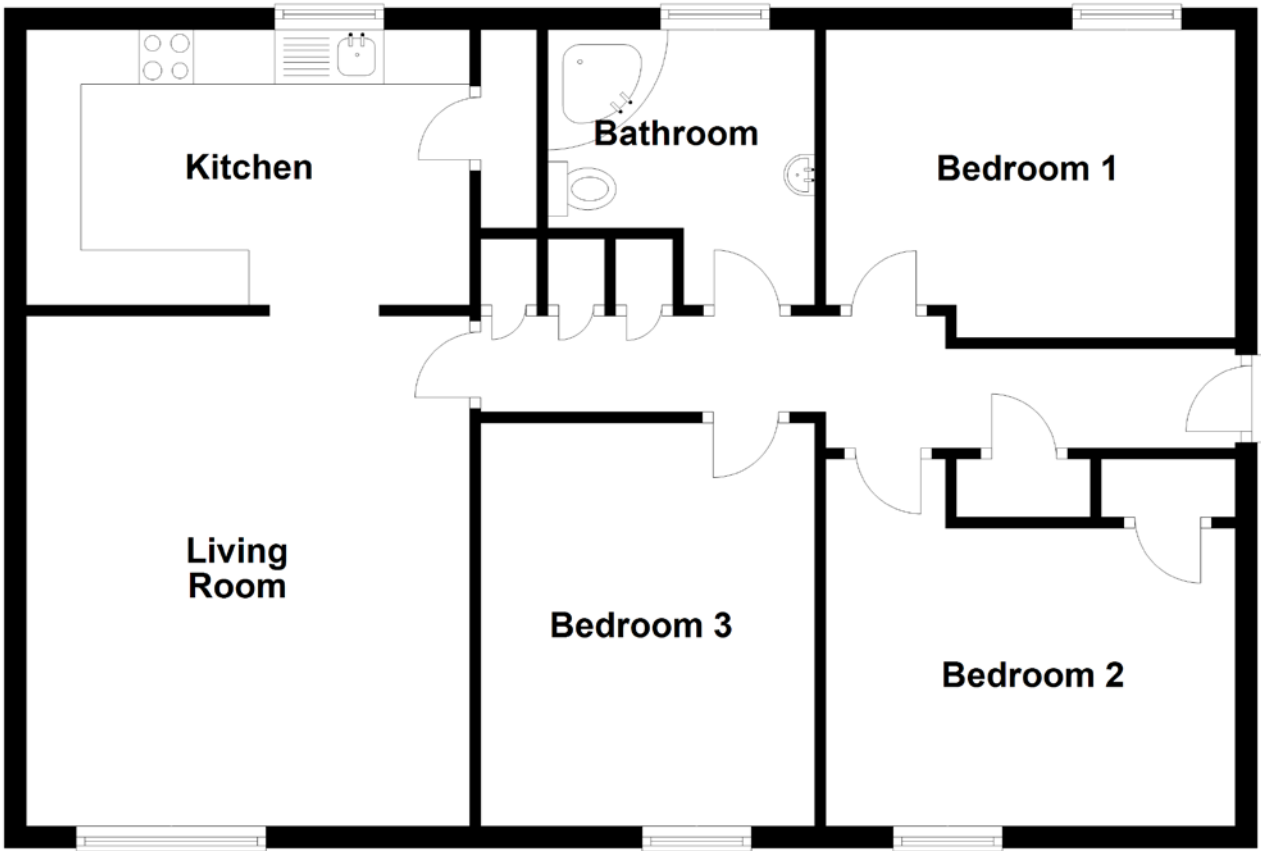


FLOOR PLAN, DIMENSIONS & MAP



Approximate Dimensions (Taken from the widest point)

Living Room 4.67m (15'4") x 4.06m (13'4")
 Kitchen 4.06m (13'4") x 2.52m (8'3")
 Bathroom 2.52m (8'3") x 2.44m (8')

Bedroom 1 3.75m (12'4") x 2.82m (9'3")
 Bedroom 2 3.75m (12'4") x 3.36m (11')
 Bedroom 3 3.69m (12'1") x 3.06m (10')

Gross internal floor area (m²): 83m² | EPC Rating: C

